

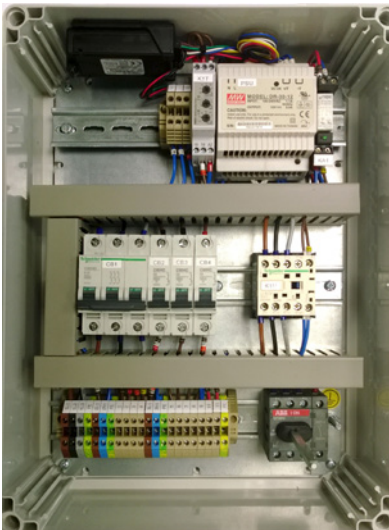
EB0025 Control Panel

Gas-Electric Auto-Changeover, SMS and HR



Adveco provide prewired hot water control solutions. The EB0025 is a complete wiring station for a gas fired hot water system with electric backup.

It includes a system isolator and overload protection. It is designed to provide a reliable supply of hot water without site personnel interaction and to keep off-site facilities management informed of any faults. The wiring station provides power to the gas fired water heater and monitors the fault condition of the appliance. In case of fault the system will automatically switch to the electric backup element. At the same time it will send a text message and/or email to inform facilities management that there is a fault with the hot water system; it has volt free contacts for a BMS error signal. The EB0025 comes with prewired heat reclaim controls for use in the optional Adveco refrigerant heat recovery system.



FEATURES

- Automatic changeover from gas to electric upon fault of gas appliance
- SMS and/or email notification of fault
- Healthy signal sent quarterly
- Isolator for electrical supply to hot water system
- Volt free contacts for BMS fault output
- Optional heat reclaim connections included as standard
- Removable lid for access in small cupboards
- IP65-rated box with hanging brackets and internal aerial

Order code	EB0025
Voltage	415V 3ph
Fault level	10 kA
Max load current	16 A/phase
Aerial	Internal
Backup immersion heater capability	Up to 9kW (max 7.5kW with SGE)
Height	400 mm
Width	300 mm
Depth	160 mm
Weight	5 kg

Suitable for use with:

SGE, SGS, BFC with back up immersion heater
HR001 Heat recovery box

Ancillaries to be used:

EB0029: immersion heater for BFC/SGS 30-60
0304296S: SGE immersion heater 7.5 kW

Adveco Ltd. Unit 7&8 Armstrong Mall, Southwood Business Park, Farnborough, Hampshire GU14 0NR
T: 01252 551 540 info@adveco.co www.adveco.co

PRACTICAL, EFFICIENT & SUSTAINABLE
BUILDING SERVICES SOLUTIONS