

TOTEM Service Plans



Adveco offers a comprehensive range of service and maintenance plans to suit the needs of the client and application. Each contract is designed to provide preventative maintenance for the TOTEM m-CHP for the duration of the term.

Every TOTEM unit includes a built-in cloud platform that allows remote monitoring of real-time performance data, including machine efficiency and run hours. With this data, Adveco can determine when maintenance operations should be carried out to ensure maximum and lasting cogeneration performance.

The basic level service contract includes a number of standard checks and replacement of consumable parts, and includes a two-year consumable parts and labour warranty.

The full level service extends maintenance operations to all moving parts of the unit, including overhaul of the engine, and increases the warranty term to five years based on a rolling contract.

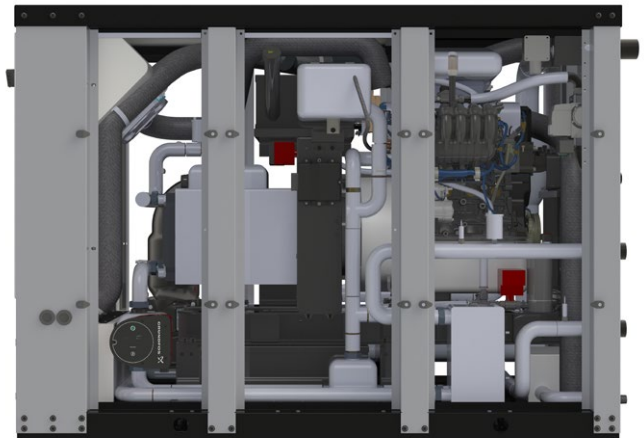
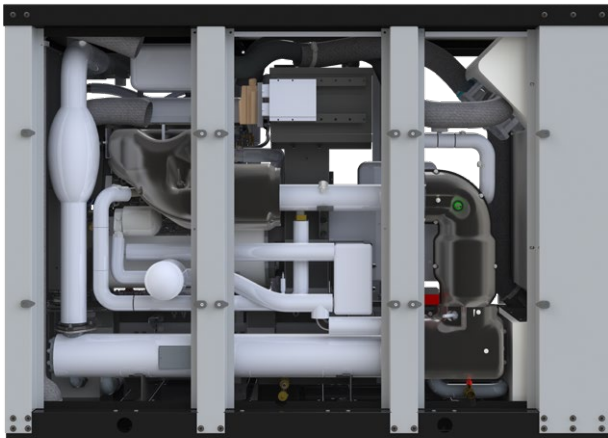
Adveco additionally offer a 10-year, or 60,000 run hour long term full contract, including all of the above plus a guarantee to maintain the efficiency of the unit at a minimum 85% of new.

FULL LONG-TERM CONTRACT BENEFITS

- Discounted price for long-term commitment
- Efficiency based maintenance increases service effectiveness
- Guaranteed unit efficiency 85% of new
- Guaranteed unit output 90% of new
- 10-year warranty includes all moving parts, internal controls and labour
- Remote monitoring and fault detection handled by Adveco

For more information please contact the Adveco Service Department on 01252 551 540 Option 6.





The table below shows an overview of activities included with each service contract type, and is included for reference only. For complete details of Advenco service contracts and for a tailored quotation to suit your needs, please contact the Advenco service department on 01252 551 540 Option 6.

		Basic Rolling Contract	Full Rolling Contract	Full Long-Term Contract
Warranty length (parts and labour)		2 years	5 years	10 years / 60,000 hours
Service periodicity basis		Hours run	Hours run	Appliance efficiency
Service activities	Basic checks of machine, connections, and fittings	✓	✓	✓
	Oil and filter, spark plugs and cable replacements	✓	✓	✓
	Overhaul of head	✓	✓	✓
	Replacement of belt and distribution tensioner	✓	✓	✓
	Replacement of engine water	✓	✓	✓
	Replacement of lambda probe pre-cat	✓	✓	✓
	Replacement of lambda probe post-cat		✓	✓
	Heat exchanger cleaning		✓	✓
	Catalytic converter overhaul		✓	✓
	Engine overhaul		✓	✓
	Replacement of battery		✓	✓
	Replacement of mixer		✓	✓
	Replacement of silicone/rubber tubes		✓	✓
	Replacement of insulation		✓	✓
	Minimum efficiency guarantee			✓