

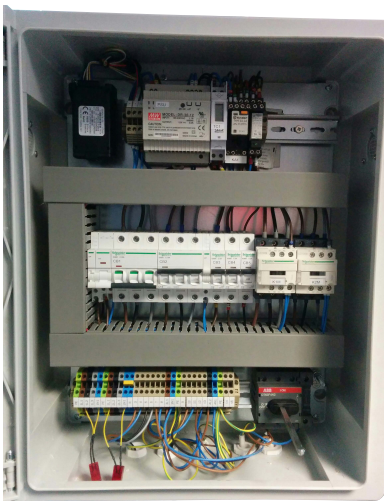
EB0028 Control Panel

Backup Electric Auto-Changeover with SMS and HR



Advenco provide prewired hot water control solutions. The EB0028 is a complete wiring station for a direct electric hot water system, including a system isolator and overload protection.

Providing power to two non-simultaneous electric immersion heaters of up to 18kW and 9kW each, the EB0028 is wired to utilise the larger element as the duty heater. In the event of a fault with this element the control panel will automatically switch to the backup immersion heater and send an SMS and/or email notification to inform offsite facilities management of the fault. It includes volt-free contacts for a BMS error signal, and the capacity for a destrat pump to be run on an internal timer for either a daily or weekly purge. Pre-wired heat reclaim controls for use with the Advenco refrigerant heat recovery system are included.



Delivered in an IP65-rated box with hanging brackets and an internal aerial, the control panel is suitable for use with any two standalone immersion heaters, or the Advenco EB0027 18/9kW dual element contained within a single flange.

FEATURES

- Auto changeover of electrical elements upon fault of duty heat source
- SMS and/or email notification of fault
- Healthy signal sent quarterly
- Isolator for electrical supply to hot water system
- Volt free contacts for BMS fault output
- Inbuilt seven day timeclock for optional destratification or purge pump
- Optional heat reclaim connections included as standard

Order code	EB0028
Voltage	415V 3ph
Fault level	10kA
Max load Current	30A
Aerial	Internal
Height	400 mm
Width	300 mm
Depth	160 mm
Weight	5 kg

Suitable for use with:
IT, ST, ITE, SSC Ranges

Optional ancillaries:
EB0027: 18/9kW Dual element immersion heater
EB0018(A): 18kW Electric immersion heater
EB0016(A): 9kW Electric immersion heater
HR001: Heat recovery box

Advenco Ltd. Unit 7&8 Armstrong Mall, Southwood Business Park, Farnborough, Hampshire GU14 0NR
T: 01252 551 540 info@advenco.co.uk www.advenco.co.uk

PRACTICAL, EFFICIENT & SUSTAINABLE
BUILDING SERVICES SOLUTIONS

