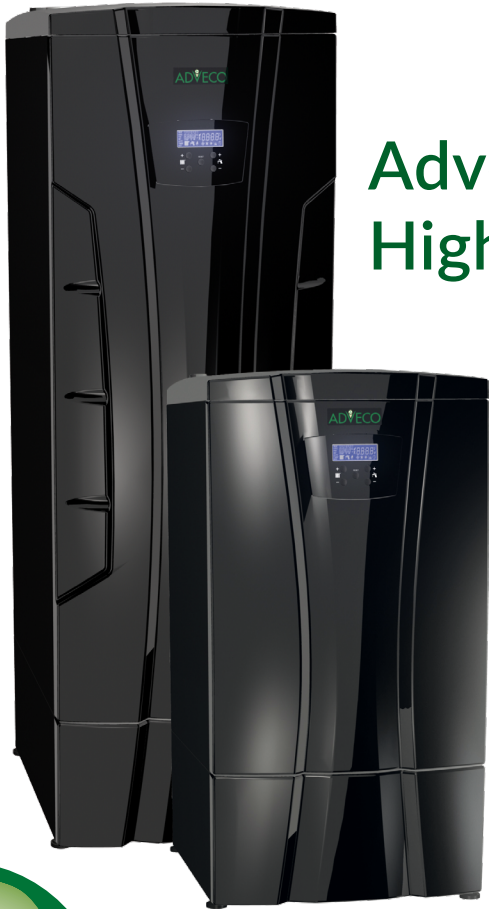


ADVECO

EXPERTLY ENGINEERED FOR YOU



MD Boiler Range



Adveco MD 70T - MD 280T High Efficiency Condensing Boilers

The Adveco MD is a range of four floor-standing boilers designed to provide a high capacity and reliable solution to a building's central heating demand. Models with heat inputs from 70 to 280 kW are suitable for a wide range of heating applications

Manufactured by our European partner with more than 50 years of experience in boiler production, the MD range delivers quality and reliability you can trust for all your commercial heating projects

Fully modulating with condensing technology

Modern, innovative and attractive design

Outputs from 14 kW to 2.24 MW



106%

HIGH EFFICIENCY



LOW NO_x

34

mg/kWh

10

YEAR HEAT
EXCHANGER
WARRANTY

FEATURES & BENEFITS

Fully condensing with low flue gas temperatures

Improves energy efficiency
Enables use of low-cost PP flues

11 bar working pressure

Suitable for large, high pressure applications

Integrated flue gas non-return valve

Enables overpressure flue systems
Prevents flue gas recirculation

Intelligent system controller

Includes maintenance self-check
0-10, MODBUS, and alarm outputs for BMS
integration

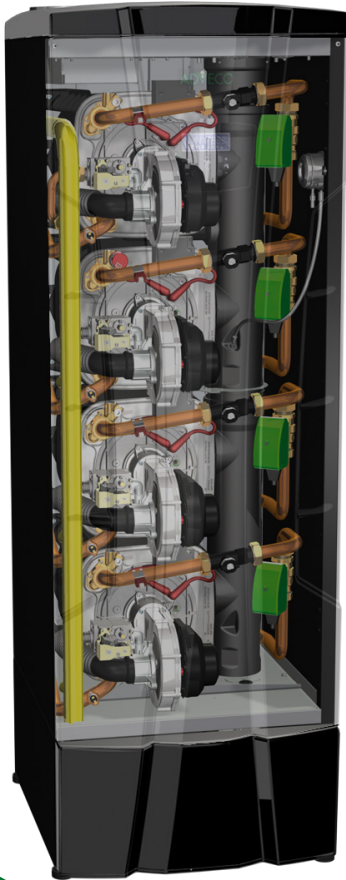
Acid condensate neutraliser

Refillable limestone bed reduces acidity

Space saving design

Stackable heat exchanger design delivers maximum
output from minimal footprint

EXPERTLY ENGINEERED FOR YOU



The Strength To Out Perform Others

Multiple heat exchangers from MD 140T and up

Combining two, three, or four 70 kW heat engines within a single floor standing chassis. Each heat exchanger incorporates a control board providing load balancing for uniform wear and built-in redundancy

Continuous non-welded run and large bore, three-pass design

Durable and corrosion resistant titanium-stabilised stainless steel construction provides high-capacity heat transfer, high flow rates, with minimal pressure loss and reduced debris to collect

10-year heat exchanger and burner warranty

Peace of mind with long-term warranty from failure or manufacturing defect. Includes seven year warranty for all parts and labour.

Adveco MD Boiler featuring AISI 316Ti titanium-stabilised stainless steel heat exchangers



Efficient pre-mix burners available for natural gas and LPG

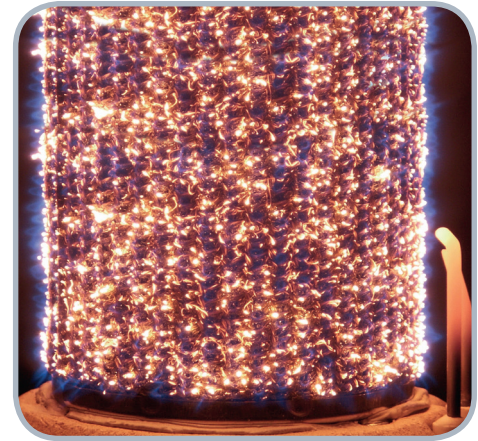
Achieves ideal combustion to minimise carbon and NO_x emissions.
CO as low as 19 ppm

106% combustion efficiency

Reduces energy costs and emissions via efficient use of fuel energy

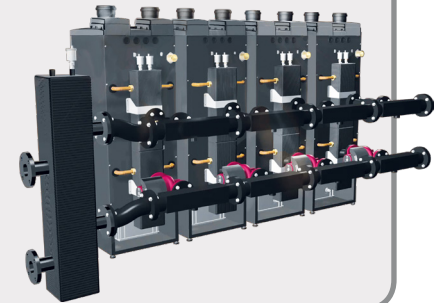
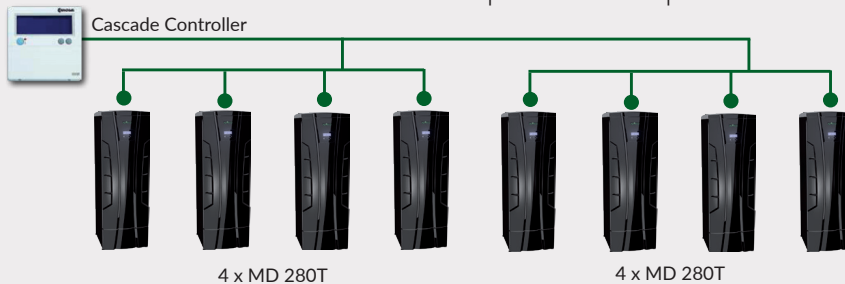
Low emission, NO_x class 6 appliance at 34 mg/kWh

Reduces harmful emissions and satisfies the requirements of the Energy-related Products (ErP) directive

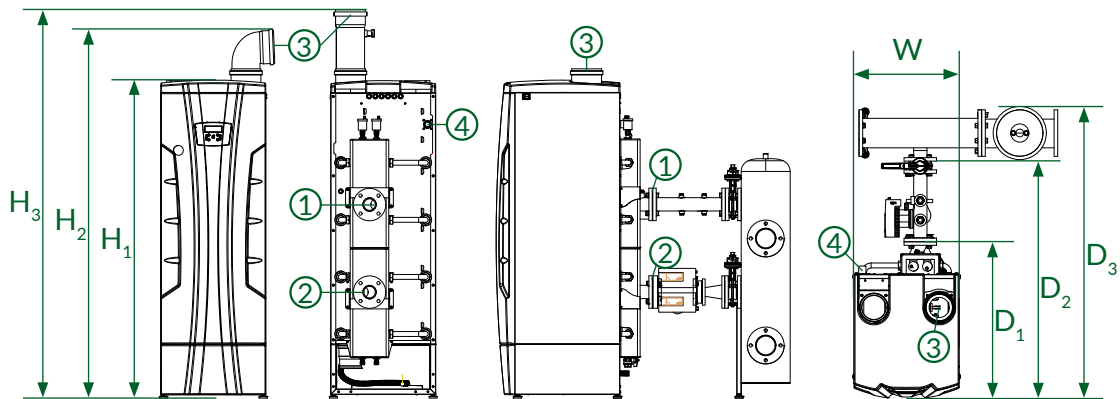


MD in Cascade

Connect up to eight MD280T units in cascade for 2240kW
No framework requirement for immediate cost savings
Occupies minimal plant room floor space



EXPERTLY ENGINEERED FOR YOU



Dimensions and Connections

Port	MD 70T	MD 140T	MD 210T	MD 280T
1 : Flow	1 ½ "	1 ½ "	DN65 PN16	DN65 PN16
2 : Return	1 ½ "	1 ½ "	DN65 PN16	DN65 PN16
3 : Flue Exhaust	Ø110 mm	Ø110 mm	Ø160 mm	Ø160 mm
4 : Gas Inlet	1 "	1 "	1 ¼ "	1 ¼ "
H ₁ : Unit height	1180 mm	1180 mm	1880 mm	1880 mm
H ₂ : Height including 90° bend	1310 mm	1310 mm	2085 mm	2085 mm
H ₃ : Height including flue test point	1445 mm	1445 mm	2165 mm	2165 mm
W : Unit width	600 mm	600 mm	600 mm	600 mm
D ₁ : Unit depth	945 mm	945 mm	896 mm	896 mm
D ₂ : Depth including rear manifold	n/a	n/a	1356 mm	1356 mm
D ₃ : Depth including cascade	n/a	n/a	1664 mm	1664 mm
Front clearance	1000 mm	1000 mm	1000 mm	1000 mm
Vertical clearance	500 mm	500 mm	500 mm	500 mm
Horizontal clearance	100 mm	100 mm	100 mm	100 mm
Rear clearance	500 mm	500 mm	500 mm	500 mm



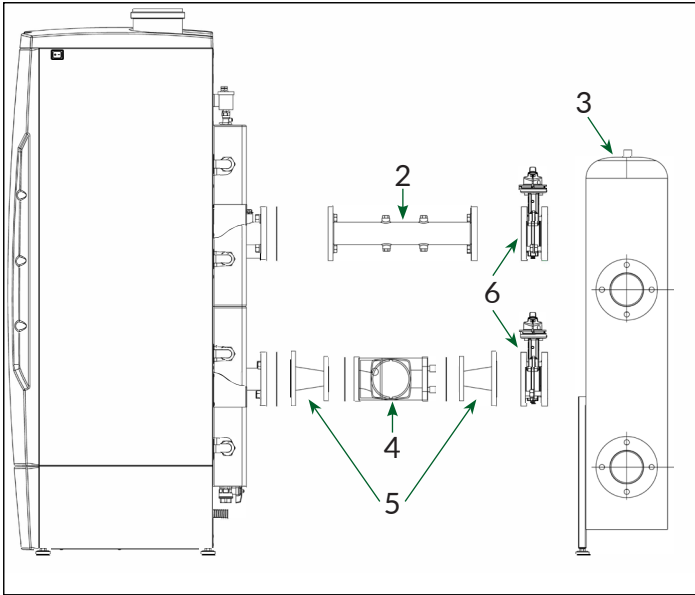
Technical Specifications		Units	MD 70T	MD 140T	MD 210T	MD 280T
Net heat input range	Maximum Minimum	kW	69.9 14.7	140.0 14.7	210.0 14.7	280.0 14.7
Heat output range (80/60)	Maximum Minimum	kW	67.9 14.1	135.8 14.1	203.7 14.1	271.6 14.1
Maximum efficiency (80/60)	At max. output At min. output	%	96.0 97.0	96.0 97.0	96.0 97.0	96.0 97.0
Heat output range (50/30)	Maximum Minimum	kW	74.0 15.6	148.0 15.6	222.0 15.6	296.0 15.6
Maximum efficiency (50/30)	At max. output At min. output	%	106.0 106.0	106.0 106.0	106.0 106.0	106.0 106.0
Efficiency at 30% load (92/42/EEC Certificate: ★★★★★)		%	106.0	106.0	106.0	106.0
Nominal water flow rate		l / s	0.83	1.66	2.50	3.32
Pressure loss at nominal flow rate		kPa	48	50	50	50
Heat exchanger water capacity		l	7.57	15.14	22.71	30.28
Heating temperature range		°C	20 - 80	20 - 80	20 - 80	20 - 80
System pressure range		bar	1 - 11	1 - 11	1 - 11	1 - 11
Supply		V / Hz	230 / 50	230 / 50	230 / 50	230 / 50
Electrical consumption	Maximum Minimum	W	140 60	280 60	420 60	560 60
Gas flow rate	Natural gas LPG	m ³ /h kg/h	7.40 5.43	14.80 10.87	22.20 16.30	29.61 21.73
NO _x emissions (0% O ₂ with natural gas. EN 15502 Class 6)		mg/kWh GCV	34	34	34	34
CO emissions		ppm	19	19	19	19
Approved flue types			B23	B23	B23	B23
Flue gas mass flow rate		kg/h	115	230	345	460
Flue gas temperature at outlet	Maximum Minimum	°C	90 30	90 30	90 30	90 30
Appliance Mass	Empty Full	kg	98 106	147 162	211 234	249 279

EXPERTLY ENGINEERED FOR YOU

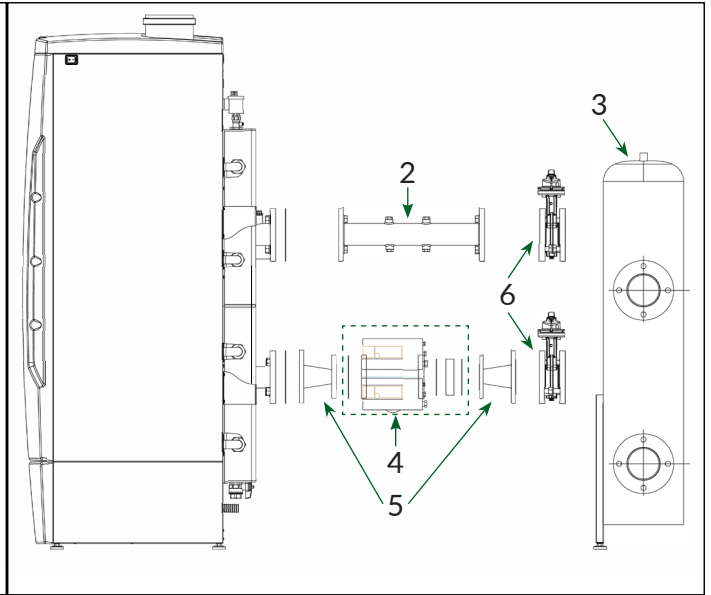
Boiler Ancillaries	2 Manifold Spacer	3 Low Loss Header For Single Boiler	4 Pump	5 Pump Adaptor Cone	Flange Elbow Set
MD 70T	n/a	200 kW: 0310335	Single head: M0132 (1 per boiler)	n/a	n/a
MD 140T	n/a	200 kW: 0310335	Single head: M0133 (1 per boiler)	n/a	n/a
MD 210T	M0127 (1 per boiler)	DN65 360 kW: 61213005	Single head: M0063 Twin head: MB0039 (1 per boiler)	DN40-DN65: M0128A (2 per pump)	DN65: 62660010
MD 280T	M0127 (1 per boiler)	DN65 360 kW: 61213005	Single head: M0063 Twin head: MB0039 (1 per boiler)	DN40-DN65: M0128A (2 per pump)	DN65: 62660010

Cascade Ancillaries	1 Manifold Kit	3 Low Loss Header For Boiler Cascade	6 Isolation Valve	Cascade Sequencer
MD 210T	2 Boilers DN100: 62660011	DN100 560 kW: 61213006	DN65: 62660014 (2 per boiler)	62110095 (1 per system)
	3 Boilers DN150: 62660012			
	4 Boilers DN150: 62660013	DN150 1400 kW: 61213007		
	5 Boilers DN150: 62660015			
	2 Boilers DN100: 62660011	DN100 560 kW: 61213006		
3 Boilers DN150: 62660012	DN65: 62660014 (2 per boiler)			
4 Boilers DN150: 62660013			DN150 1400 kW: 61213007	
MD 280T	5 Boilers DN150: 62660015			






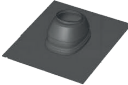



Single Pump



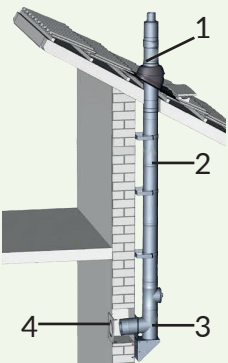
Twin Pump

EXPERTLY ENGINEERED FOR YOU

Standard Flue	Size:	110 mm PP	160 mm PP	200 mm PP
Suitable for:		MD 70T; MD 140T	MD 210T; MD 280T MD 70T*; MD 140T*	MD 210T*; MD 280T*
*: Requires adaptor to upsize flue:			110-160mm: 0718025	160-200mm: 071823
Flue Terminals		Vertical: MB0025	0718761	0718762
		Horizontal: MB0028	100035790094	100035790004
Flue Extension 1m			0718102	0718132
Flue Bends		45° Bend: 0718140	0718160	0718170
		90° Bend: 0718141	0718161	0718171
Roof Flashings		Flat: 0146184	0746066	0146185
		15-55° Pitched: MB0033	100035790099	100035790003
Flue Bracket			0169158	200050718012
Flue Test Point Extensions		Included as standard	Included as standard	Included as standard



External flue size:	110/160 mm PP/SS	160 mm/225 mm PP/SS	200 mm/300 mm PP/SS
Suitable for:	MD 70T; MD 140T	MD 210T; MD 280T <i>MD 70T*; MD 140T*</i>	MD 210T*; MD 280T*
*: Requires adaptor:		110-160 mm: 0718025	M/F 160-200 mm: 071823



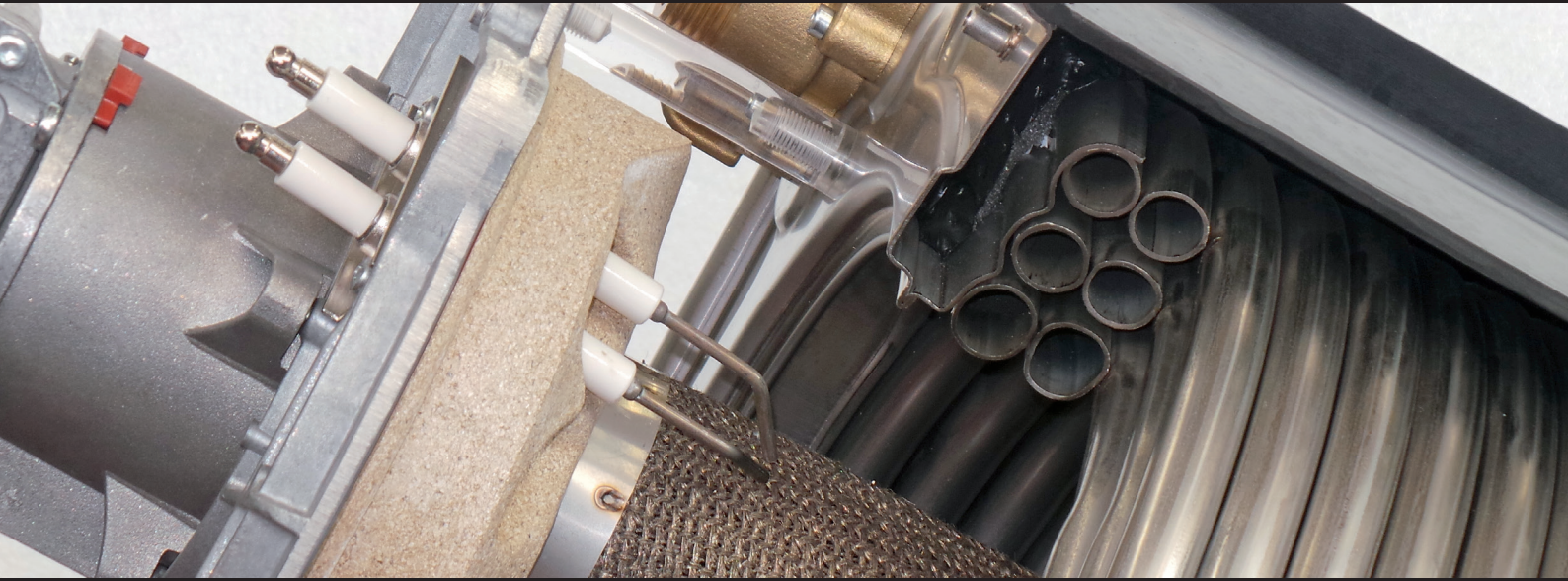
1, 3, 4: External Riser Kit:	MB0026	MB0029	MB0031
2: 1m Extension Kit:	MB0027	MB0030	MB0032
45° External Bend:	n/a	200075045316	200075045916
90° External Bend:	n/a	200075045326	200075045926

Maximum Flue Runs		110 mm PP	160 mm PP	200 mm PP
MD 70T	Straight Run:	19.1 m	41.1 m	65.2 m
	Loss Per Bend (45°/90°):	- 1.2 m / - 2.8 m	- 1.2 m / - 2.8 m	- 1.2 m / - 2.8 m
MD 140T	Straight Run:	10.0 m	21.5 m	34.1 m
	Loss Per Bend (45°/90°):	- 2.0 m / - 4.0 m	- 1.2 m / - 2.8 m	- 1.2 m / - 2.8 m
MD 210T & MD280T	Straight Run:	n/a	10.0 m	15.9 m
	Loss Per Bend (45°/90°):		- 2.0 m / - 4.0 m	- 1.2 m / - 2.8 m

EXPERTLY ENGINEERED FOR YOU

ADVECO

EXPERTLY ENGINEERED FOR YOU



Advenco Ltd. Unit 7 & 8 Armstrong Mall, Southwood Business Park, Farnborough, Hampshire GU14 0NR
Company Reg : 09493966 T : 01252 551 540 E : enquiries@advenco.co I : www.advenco.co

SR300038.r2
ADVECO MD BOILERS PRODUCT GUIDE 2019