



EXPERTLY ENGINEERED FOR YOU



**HOT WATER, HEATING, COGENERATION, LOW CARBON SYSTEMS  
AND PACKAGED PLANTROOMS FOR BESPOKE COMMERCIAL PROJECTS**

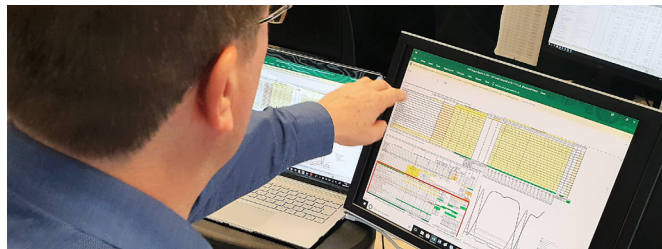


**PRODUCT RANGE 2020**

# Peace Of Mind For Your Business Critical Systems

With almost 50 years of industry experience, Adveco Ltd. is the trusted specialist provider of bespoke hot water, heating and low carbon systems to the building services industry. Committed to partnering with its commercial and governmental customers, Adveco helps create comfortable, efficient, functional, safe and sustainable buildings through invaluable support in the design, supply, commissioning and service of business-critical hot water, heating and cogeneration.

Recognised by BSRIA as the first UK supplier of direct fired water heaters, and responsible for the introduction of condensing water heating to the UK, Adveco continues to innovate today. Working in exclusive partnership with Europe's most reputable manufacturers, Adveco designs, supplies and supports more than a thousand commercial boiler, hot water, solar thermal and cogeneration systems every year.



Our industry leading Technical and Design teams support contractors with a single, versatile, specialist resource that ensures delivery of the most cost-effective system.

Specifiers and designers gain informed support and partnership for the design and delivery of industry defining systems optimised to be highly efficient.

All backed by the industry's most comprehensive warranties and support.



Adveco (AWP) Ltd. trading as A.O.Smith Water Heaters

# Manufacturer Approved Commissioning With Adveco



- Ensure the installation is tested and meets all current legislation
- Unlock extended and labour warranties with Adveco commissioning
- Receive priority callout in the unlikely event of a breakdown within the warranty period
- Faster, single visit resolution with official parts always carried on our vehicles
- Extended product warranties will start from Adveco commissioning date and not delivery date

## Be Prepared For The Future With Adveco Service Plans

Adveco offers a full range of service and warranty maintenance packages designed to fit the specific needs of the client.

Get swift response from a team of highly skilled engineers based throughout the UK.

Facility Managers gain reliable, business critical hot water, heating and power systems that exhibit maximum system performance for low running costs, ease of management and longevity to realise low total cost of ownership.



**EXPERTLY ENGINEERED FOR YOU**

## A.O. Smith Condensing Gas Water Heaters



### BFC Cyclone

Wide range of condensing gas water heaters  
Nominal outputs from 31 – 122 kW,  
suitable for a wide range of applications  
Efficiencies up to 97% gross  
Water capacities from 217 – 480 litres  
Two years parts and labour warranty  
(three years on tanks)



### IR Innovo

A range of fully room  
sealed condensing gas  
water heaters  
Efficiencies up to 98% gross  
Outputs from 11.7 to 31.3 kW  
Water capacities from 160 – 380 litres  
NO<sub>x</sub> emissions from 22 – 37 mg/kWh  
Two years parts and labour warranty (three  
years on tanks)

## A.O. Smith Indirect and Storage Tanks



### IT, ITS, ST

A range of indirect water heaters (calorifiers) and storage tanks from  
300 – 3000 litres for a wide range of applications  
Zero to two internal heating coils with capacities from 46 – 156 kW  
A.O. Smith patented PermaGlas Ultra Coat second-generation glass  
coating technology prevents corrosion



For AO Smith sales and enquiries, please email [sales@aosmith.co.uk](mailto:sales@aosmith.co.uk)  
or telephone 0870 267 64 84

## A.O. Smith Electric Water Heaters



### DRE

Three-phase electric water heater for commercial applications  
Fitted with 3 – 9 incoloy-sheathed elements to deliver heating capacities from 9 – 54 kW  
Water capacities from 200 – 300 litres  
A.O. Smith patented PermaGlas Ultra Coat second-generation glass coating technology to prevent corrosion

## A.O. Smith Solar Thermal Systems

### Collectors and Drainback

High-efficiency flat panel solar thermal collectors.  
Available in both portrait and landscape, flat, wall and frame mounted configurations.  
A unique, intrinsically safe drainback system is used to prevent overheating and stagnation of solar fluid for longevity and reliability



### SGS, SGE

High efficiency condensing gas- solar water heaters with inbuilt solar thermo controllers.  
**SGS:** Output capacities from 31–121 kW  
**SGE:** Integrated solar heat exchange coil.  
Output capacities from 40–60 kW

## A.O. Smith Boilers and Cascade Systems

### UB Boilers

High efficiency condensing gas boiler range from 68–136 kW, available as floor standing or wall mounted units. All boilers feature inbuilt controls and 7:1 modulation, and are NO<sub>x</sub> class 6 with very low gas usage and emissions



### Cascade Systems

Cascade options for up to eight UB boilers in compact wall or frame configurations, side by side or back to back, with common controls and low loss headers available in various sizes

**EXPERTLY ENGINEERED FOR YOU**



## FPI Air Source Heat Pump Range



- Reduced operation costs
- Reduced environmental impact
- Compact and easy to install
- Integrated controls for easy operation
- Low maintenance
- Above average system COP

The Advenco FPI range of 9kW & 13kW Air Source Heat Pumps (ASHP) delivers an easy to install method for commercial sites to achieve lower cost water heating or cooling.

The FPI range provides excellent levels of performance, especially throughout the UK's relatively mild winters. With sleek looks and quiet operation, the compact monobloc design is capable of providing domestic hot water (DHW) at up to 55°C, or cool water to -7°C for use in fan coils.

The FPI range offers an above average system COP of as much as 4.03 for the 9kW and 3.89 for the 13kW variant. Seasonal variation ranges from 1.5 to a very high 4.7.

### The cornerstone of a hybrid system

When packaged in combination with a gas boiler and control system, the FPI presents an attractive option to meet the space heating demand of a property with less adaptation.

The availability of two heat sources is extremely advantageous, giving a property the versatility of switching to the gas boiler at time of network peak. This not only reduces operational costs, but means the heat pump can be reduced in size, such as the compact FPI-9. These hybrid systems can operate at a higher temperature grade, as well as remaining effective at very low temperatures when compared to a standalone electric ASHP system.

For Advenco sales and enquiries, please email [enquiries@advenco.co](mailto:enquiries@advenco.co)  
or telephone **01252 551 540**

## TOTEM micro-Combined Heat & Power

The TOTEM micro combined heat and power (m-CHP) system allows a building to produce electricity on site and recover energy from the exhaust heat, which can then be used for central heating or water heating in the building.



### Combined Heat and Power Range

Outputs of 10, 20, 25 and 50 kW<sub>e</sub>

### Highly Efficient

Total cogeneration efficiency up to 107.4%

### Reduce Running Costs

Save as much as £1.25 per running hour

### Ultra-low emissions

NO<sub>x</sub> at <12 mg/kWh and <10 mg/Nm<sup>3</sup>, and CO at <10 mg/Nm<sup>3</sup>

### Space saving compact design

Ease of installation as heat exchangers are included in the packaged box design

### Comfortably quiet operation

T10 56.7 dB(a) at 1m.

### Automatic oil change

Reduces engine wear and keeps efficiency high

### 2.5 million mile equivalent lifespan

Supported by Adveco Fully Maintained Long Term Plan, extend lifespan for more than 10 years of operation

## MD High Capacity Floor-Standing Condensing Gas Boiler Range



Fully condensing with low flue gas temperatures  
Models with heat inputs of 70, 140, 210 and 280 kW

Improves energy efficiency

Enables use of low-cost PP flues

Output range from 14 kW – 2.24 MW with  
turn down ratio as great as 20:1

Patented AISI 316Ti (titanium-stabilised stainless steel)  
heat exchanger

Durable and corrosion resistant

**11 bar working pressure**

Suitable for large, high pressure applications

**Class 6 Low NO<sub>x</sub> emissions**

34 mg/kWh, satisfies ErP directive

**Integrated flue gas non-return valve**

Enables overpressure flue systems

Prevents flue gas recirculation

**Intelligent system controller**

Includes maintenance self-check

0-10, MODBUS, and alarm outputs  
for BMS integration

**Acid condensate neutraliser**

Refillable limestone bed reduces acidity

**Space saving design**

Stacked heat exchanger  
design delivers maximum  
output from minimal footprint

**106%**  
COMBUSTION  
EFFICIENCY

LOW NO<sub>x</sub>  
**34**  
mg/kWh

**10** YEAR HEAT  
EXCHANGER &  
BURNER WARRANTY

For Advenco sales and enquiries, please email [enquiries@advenco.co](mailto:enquiries@advenco.co)  
or telephone 01252 551 540



## MD High Capacity Wall-Mounted Condensing Gas Boiler Range

A range of 10 high efficiency commercial wall-mounted gas condensing boiler variants with rated heat outputs of 15, 24 and 34 kW for light commercial central heating and DHW projects.

The MD15, MD24 and MD34 have two variants to accommodate either central heating only or DHW via an indirect water heater. A third variant of the MD24 and MD34 includes an integrated Plate Heat Exchanger for instantaneous DHW.

With a 60kW heat output, the MD60 is designed to meet the demands of commercial central heating. Available in two variants, it can be selected with (MD60C), or without (MD60A), an integrated system pump.

MD offers integrated run/fault signal for connection to a BMS system. With 0-10 V input on the MD, a BMS system incorporating interior/exterior sensors can deliver automated heating control with these boilers.

The entire MD wall-mounted range is supported by a seven-year parts and labour warranty when boilers are commissioned by Advenco.



### MD15, MD24, MD34

Ultra-low NOX emissions at 25-31 mg/kWh

Uses low cost 60/100 mm diameter PP concentric flue system

Natural gas or LPG

### MD60

Ultra-low NOX emissions at 27.9 mg/kWh

Uses low cost 80/125 mm diameter PP concentric flue systems

Natural gas or LPG

# EXPERTLY ENGINEERED FOR YOU

## Stainless Steel Cylinders



### SSB, SSI, SST, SSB-E, SSB-D

Versatile range of high quality stainless steel buffers and calorifiers from 200 – 2,500 litres

Available with 0, 1, or 2 high capacity stainless steel heat exchange coils from 18 – 108 kW each. Up to 216 kW with two coils

Electric immersion capacities from 3 – 84 kW

Direct connection flanges for use with high flow instantaneous water heaters

## Heating Buffers and Thermal Stores

### MSS, MST, CWT

**MSS:** Diverse range of carbon steel buffers from 500 – 10,000 litres  
Select 0, 1, or 2 internal heat exchange coils for models up to 5,000 litres

Customisable to suit your application

**MST:** Thermal storage tanks from 600 – 2,000 litres with high capacity DHW coil

Select 0, 1, or 2 internal heat exchange coils

**CWT:** Chilled water buffer vessels from 500 – 5,000 litres



For Adveco sales and enquiries, please email [enquiries@adveco.co](mailto:enquiries@adveco.co)  
or telephone 01252 551 540

## Packaged Plate Heat Exchangers



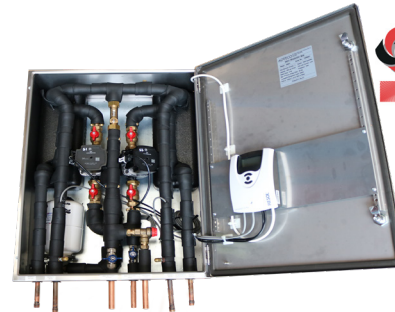
### PPN, PPS

Constructed from gasketed stainless steel plates and supplied pre-assembled with pumps, pipework, controls and valves on a metal skid base  
Designed for instantaneous or semi-storage applications  
Suitable for use with DHW systems up to 99°C  
Range from 100 – 600 kW  
24 Volt controls system including a digital LED display

## HR001 Heat Recovery Unit

### HR001

A standalone Heat Recovery Unit providing a convenient, packaged unit to recover refrigerant system waste heat  
Connects between fridge and freezer condenser units and a hot water installation  
Capable of achieving temperatures as high as 50°C.  
Incorporates two independent heat recovery circuits, plate heat exchangers, glycol pumps, temperature differential controller, expansion vessel, pressure relief and isolation valves  
Pre-wired and installed within a grey IP rated housing



**EXPERTLY ENGINEERED FOR YOU**

## Bespoke Packaged Plant Rooms

Adveco will size, design, and manufacture to order bespoke Packaged Plant Room enclosures suitable for placement beside or on top of buildings with a flat roof space. When delivered to the project location, the plant room module can be easily sited, requiring just external pipework and final electrical connections to be completed.

Proper co-ordination of equipment, controls and timely project delivery are the most difficult, and therefore costly, aspects of creating a modern environmental application. Pre-built packaged plant rooms not only maximise space, but provide a proven method to secure new, resilient, highly efficient and cost-effective to operate domestic hot water (DHW), heating and low carbon systems.

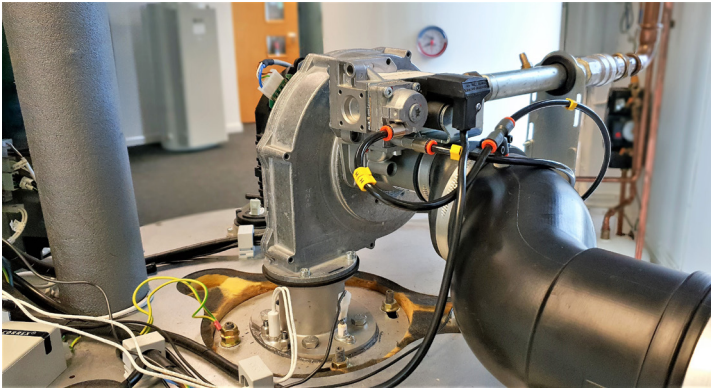
Integrating and combining gas, electric and low carbon technologies, including micro-CHP and ASHP, into a single packaged hybrid system also provides a timely answer to meeting new sustainability targets while future-proofing the system for integration with new energy sources, such as green gas and hydrogen.

- Maximise usable space
- Accelerate project timescales
- Substantially reduce on-site labour
- Improve quality of installation
- Gain system resilience



For Adveco sales and enquiries, please email [enquiries@adveco.co](mailto:enquiries@adveco.co)  
or telephone 01252 551 540

# Accredited Training



*Dedicated training facilities at Adveco's Farnborough headquarters*

As a provider of heating and hot water technologies, Adveco Ltd. is committed towards the continued growth of knowledge and experience of professionals in the energy and sustainability sector.

Accredited with CIBSE, we are pleased to be able to provide Continuing Professional Development (CPD) seminars for the industry and customers. A range of training courses hosted at your venue or within the training facilities at Adveco's head office in Farnborough are available now. Contact us to learn more or request a session.

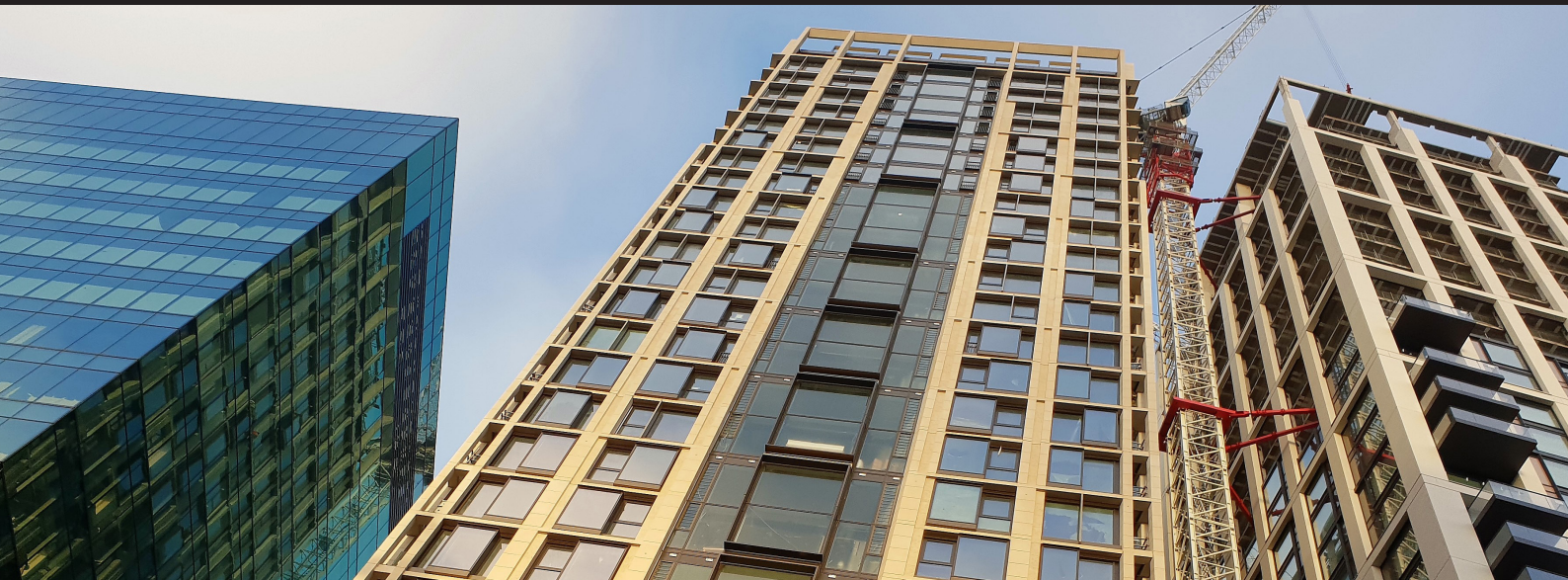
**LEARN WITH US**

**EXPERTLY ENGINEERED FOR YOU**



# ADVECO

EXPERTLY ENGINEERED FOR YOU



**Advenco Ltd.** Unit 7 & 8 Armstrong Mall, Southwood Business Park, Farnborough, Hampshire GU14 0NR  
Company Reg : 09493966 T: 01252 551 540 E: [enquiries@advenco.co](mailto:enquiries@advenco.co) I: [www.advenco.co](http://www.advenco.co)

SR100053.r5  
Advenco Product Range 2020