

Advenco MD60A, MD60C

High Efficiency Wall-Hung Condensing Boilers



The Advenco MD range of high efficiency condensing boilers is designed to provide a high capacity, reliable and compact solution to a building's central heating demand.

Manufactured by our European partner with over 50 years of experience in boiler production, the MD60 is a wall-hung condensing boiler with a rated heat output of 60 kW and is available with (MD60C) or without (MD60A) an integrated system pump.

The boiler features a single high quality patented heat exchanger constructed from a continuous, non-welded run of titanium-stabilised stainless steel, providing exceptional construction strength and corrosion resistance. The brand-exclusive 3 pass design features large bore, circular tube cross sections that reduce the collection of debris.

With an efficient pre-mix burner and minimal NO_x and CO emissions, the MD60 is an eco-friendly solution to serve a central heating system. The unit additionally features a high 1:8 modulation ratio to ensure maximum efficiency even during periods of low demand.

Also included is an inbuilt controller with LCD display that ensures full temperature control and a maintenance self-check of primary components and functions.

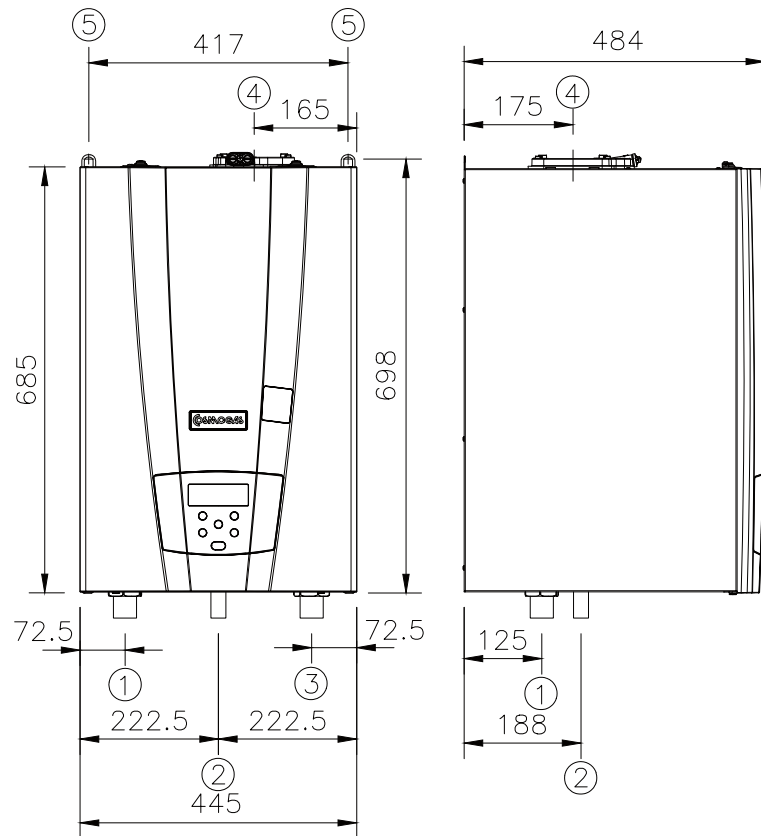
STANDARD FEATURES

- Extremely high quality AISI 316Ti heat exchangers with 7 year warranty ensures lasting reliability and efficiency
- High efficiency pre-mix burner with 7 year warranty provides large modulation range
- Compact wall-hung arrangement
- Ultra-low NO_x emissions at 27.9 mg/kWh
- Available using natural gas or LPG
- Standard concentric flue systems using low cost 80/125 mm diameter PP
- Integrated run/fault signal for connection to BMS



Connections

Port	Purpose	MD 60
1	Heating supply	1 ½" / 42 mm
2	Gas inlet	¾"
3	Heating return	1 ½" / 42 mm
4	Concentric flue connection	Ø80/125 mm
5	Support mounts	



Technical Specifications

		Units	MD 60A	MD 60C
Heat input range	Maximum	kW	57.8	57.8
	Minimum		12.0	12.0
Heat output range (80/60)	Maximum	kW	56.1	56.1
	Minimum		11.6	11.6
Maximum efficiency (80/60)	At max. output	%	97.1	97.1
	At min. output		97.0	97.0
Heat output range (50/30)	Maximum	%	60.7	60.7
	Minimum		12.8	12.8
Maximum efficiency (50/30)	At max. output	%	105.0	105.0
	At min. output		107.0	107.0
Efficiency at 30% load (92/42/EEC Certificate: ★★★★★)		%	107.0	107.0
Gas flow rate	Methane	m ³ /h	6.1	6.1
	LPG	kg/h	4.5	4.5
Heat exchanger water capacity		l	3.2	3.2
Heating temperature range		°C	20 - 80	20 - 80
System pressure range		bar	1 - 4	1 - 4
Supply		V / Hz	230 / 50	230 / 50
Consumed electric power		W	140	305
Weighted CO (0% O ₂ with methane)		ppm	15	15
Weighted NO _x (0% O ₂ with methane)		mg/kWh	27.9	27.9
Flue gas mass flow rate		kg/h	99	99
Dimensions H × W × D		mm	685 × 445 × 484	685 × 445 × 484
Empty weight		kg	44	46

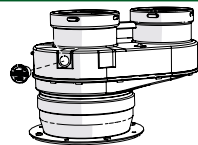
Ancillaries & Flue Components

For further information and specifications on the full range of available flues and ancillaries, please contact the Adveco application design department at technical@adveco.co or 01252 551 540 Option 5. All drawings displayed below are for representative purposes only and actual products may differ.

Boiler Adaptor - Parallel

Part number: 62617315

Size: Ø80/125 to 2xØ80

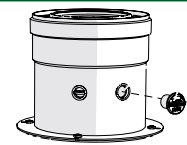


Description: Concentric to parallel flue adapter for separated air intake and flue gas outlet.

Boiler Adaptor - Concentric

Part number: 62617314

Size: Ø80/125

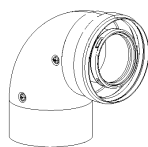


Description: Concentric flue coupling. Aluminium / PP.

Flue concentric elbow - 90°

Part number: 62617321

Size: Ø80/125



Description: Male to female 90° concentric flue elbow. Aluminium / PP.

Flue concentric elbow - 45°

Part number: 62617322

Size: Ø80/125

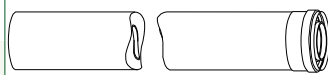


Description: Male to female 45° concentric flue elbow. Aluminium / PP.

Flue concentric 1m extension

Part number: 62617323

Size: Ø80/125; 1m

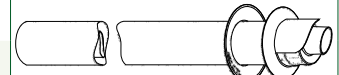


Description: One metre concentric flue extension, Aluminium / PP.

Flue concentric horizontal terminal

Part number: 62617324

Size: Ø80/125; 1000 mm

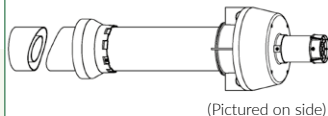


Description: One metre concentric flue horizontal wall-hung anti-wind terminal. Aluminium / PP.

Flue concentric vertical terminal

Part number: 62617325

Size: Ø80/125; 1000 mm



Description: One metre concentric flue vertical terminal. Aluminium / PP.

Low loss header 90kW DN32

Part number: 61211005

Size: Ø1 ½"; 150x140x600 mm



Description: Pre-insulated low loss header DN32 for up to 90 kW. Suitable for vertical or horizontal installation.