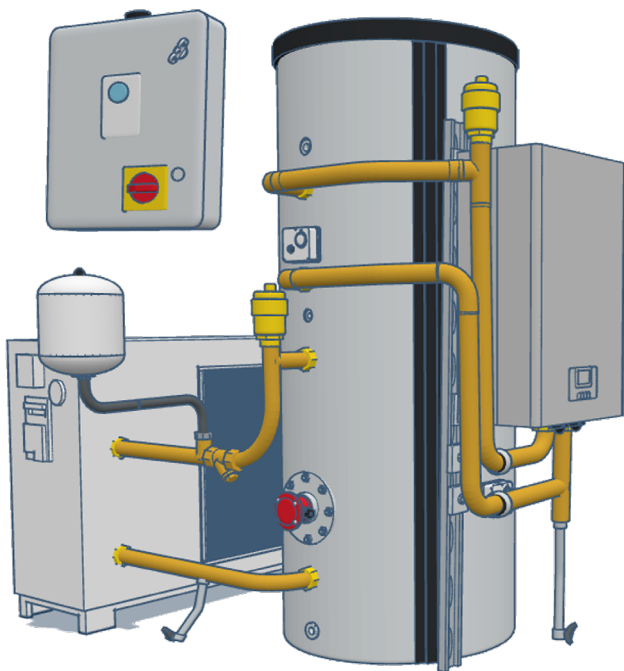


FUSION Packaged Electric Systems

FUSION-E/Eplus, FUSION-T/Tplus Hot Water Systems



The Adveco FUSION range is a low carbon, all electric packaged hot water system available in a number of presized variants to address a host of commercial hot water applications.

Adveco FUSION systems feature a corrosion-resistant stainless steel calorifier paired with a mountable Premium electric boiler, with options for air source heat pump preheating, supplied as a complete package including all controls, bracketry, and boiler pipework.

With tank sizes from 300 to 750 litres and a range of heat input options, the electric-only systems eliminate on-site carbon emissions and maximise efficiency through bespoke controls designed to seamlessly integrate all components. Systems are designed to be simple to install and maintain, with minimal installation footprint and reduced maintenance demands.

FUSION-E systems use a high powered tank-mounted electric boiler to provide a reliable electric hot water system. FUSION-T systems increase sustainability using a twin-coil tank and the integration of an air source heat pump as a preheat, where the heat pump can run in its most efficient configuration, with the electric boiler providing only high grade top-up heat.

For projects requiring additional resilience, both systems are available in 'Plus' formats, featuring an additional backup immersion heater and automated changeover and alert controls, ensuring continuity of hot water supply even in the event of a primary appliance fault.

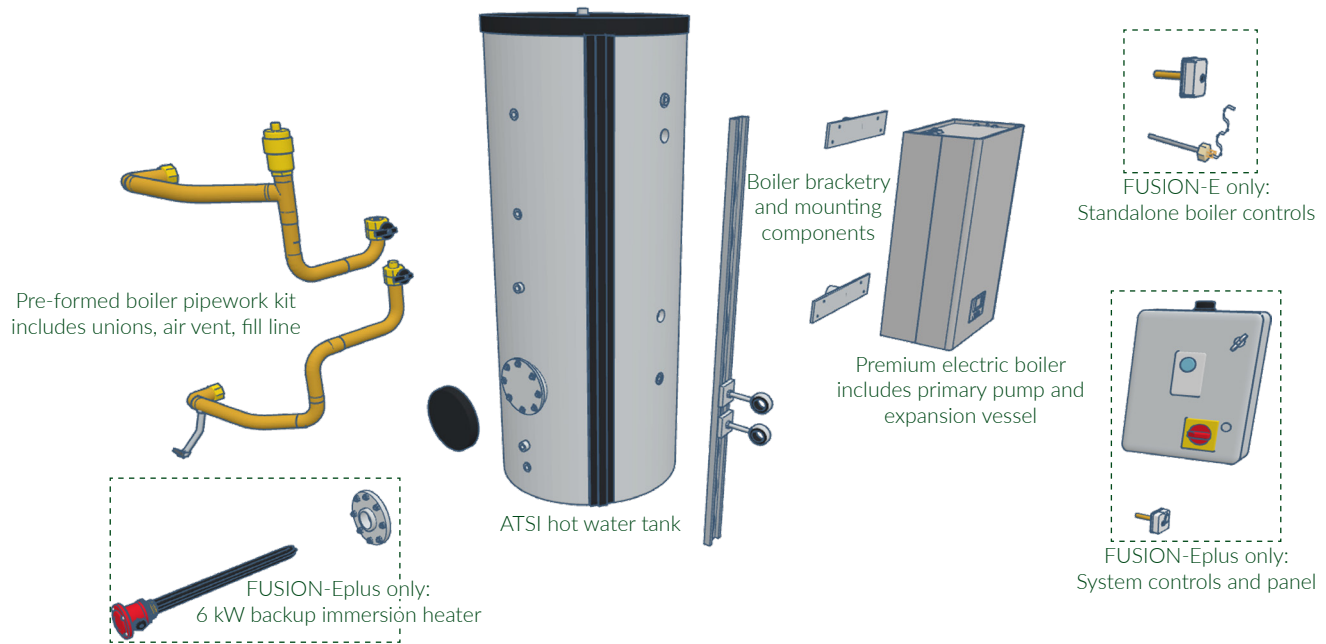
FEATURES

- Wide range of pre-sized variants to suit almost any application.
- Available with 300–750 litre tank capacities, using corrosion resistant stainless steel rated to 10 bar working pressure as standard and suitable for almost all water conditions.
- 6-10 kW ASHP preheat options
- 6-24 kW electric boiler options
- 6 kW backup immersion options with automated fault activation
- Dedicated control systems for straightforward and efficient integration of all components
- R32 ASHP refrigerent ensures a low global warming potential
- Compact space saving form factor with pre-built pipework kits and boiler mounts on either side of the tank to suit the location.



Adveco FUSION-E and Eplus

Single coil hot water tank with electric boiler and all required ancillaries in a convenient single package. 'Plus' variant adds a control panel and backup heat source capabilities.

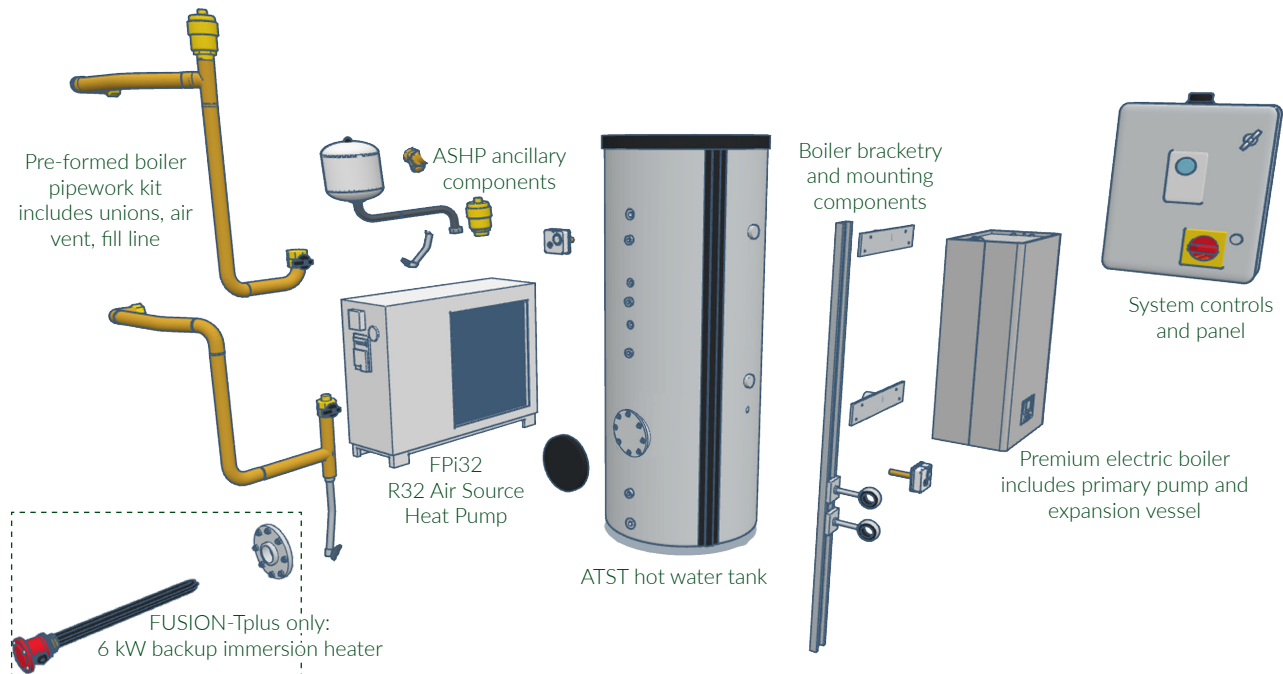


FUSION E/Eplus System Options ⁽¹⁾	Tank Model	Storage Volume	Electric Boiler Model	Power Output (kW)	Max Current Demand (A)	Continuous DHW Flow Rate (l/h)	Peak Draw Off Capacity (l)		
							30min	60min	120min
FE / FEplus 300-9	ATSI 300	289	P9	9.0	39.1	385.5	308.3	385.5	539.8
FE / FEplus 300-12	ATSI 300	289	P12	12.0	17.4	436.9	334.1	436.9	642.6
FE / FEplus 300-24	ATSI 300	289	P24	24.3	35.2	647.8	439.5	647.8	1064.3
FE / FEplus 400-9	ATSI 400	411	P9	9.0	39.1	483.1	405.9	483.1	637.4
FE / FEplus 400-12	ATSI 400	411	P12	12.0	17.4	534.5	431.7	543.5	740.2
FE / FEplus 400-24	ATSI 400	411	P24	24.3	35.2	745.4	537.1	745.4	1161.9
FE / FEplus 500-9	ATSI 500	490	P9	9.0	39.1	546.3	469.1	546.3	700.6
FE / FEplus 500-12	ATSI 500	490	P12	12.0	17.4	597.7	494.9	597.7	803.4
FE / FEplus 500-24	ATSI 500	490	P24	24.3	35.2	808.6	600.3	808.6	1225.1
FE / FEplus 580-9	ATSI 580	575	P9	9.0	39.1	614.3	537.1	614.3	768.6
FE / FEplus 580-12	ATSI 580	575	P12	12.0	17.4	665.7	562.9	665.7	781.4
FE / FEplus 580-24	ATSI 580	575	P24	24.3	35.2	876.6	668.3	876.6	1293.1
FE / FEplus 750-9	ATSI 750	756	P9	9.0	39.1	759.1	681.9	759.1	913.4
FE / FEplus 750-12	ATSI 750	756	P12	12.0	17.4	810.5	707.7	810.5	1016.2
FE / FEplus 750-24	ATSI 750	756	P24	24.3	35.2	1021.4	813.1	1021.4	1437.9

(1): Additional system configurations available from Adveco on request

Adveco FUSION-T and Tplus

Twin coil hot water tank with air source heat pump, electric boiler, control panel and required ancillaries in a convenient single package. 'Plus' variant includes an improved control panel and backup heat source capabilities.



FUSION T/Tplus System Options ⁽¹⁾	Tank Model	Storage Volume	ASHP		Electric Boiler		Max Current Demand (A)	Continuous DHW Flow Rate (l/h)	Peak Draw Off Capacity (l)		
			Model	Output kW ⁽²⁾	Model	Output kW			30min	60min	120min
FT / FTplus 300-14	ATST 300	289	FPi32-6	4.7	P9	9.0	50.1	235.2	221.7	339.3	574.5
FT / FTplus 300-17	ATST 300	289	FPi32-6	4.7	P12	12.0	28.4	286.6	247.4	390.7	677.3
FT / FTplus 300-18	ATST 300	289	FPi32-12	8.6	P9	9.0	57.1	302.1	255.1	406.1	708.2
FT / FTplus 300-19	ATST 300	289	FPi32-9	6.8	P12	12.0	32.4	232.1	265.6	427.2	750.3
FT / FTplus 300-22	ATST 300	289	FPi32-6	4.7	P24	16.8	46.2	369.1	288.6	473.2	842.3
FT / FTplus 300-24	ATST 300	289	FPi32-12	8.6	P24	15.4	53.2	411.9	310.0	516.0	927.9
FT / FTplus 400-17	ATST 400	411	FPi32-6	4.7	P12	12.0	28.4	286.6	288.8	432.1	718.7
FT / FTplus 400-18	ATST 400	411	FPi32-12	8.6	P9	9.0	57.1	302.1	296.5	447.5	749.6
FT / FTplus 400-19	ATST 400	411	FPi32-9	6.9	P12	12.0	32.4	323.1	307.1	468.6	791.8
FT / FTplus 400-21	ATST 400	411	FPi32-12	8.6	P12	12.0	35.4	353.5	322.2	499.0	852.5
FT / FTplus 400-24	ATST 400	411	FPi32-6	4.7	P24	19.1	46.2	408.7	349.9	554.2	962.9
FT / FTplus 400-26	ATST 400	411	FPi32-12	8.6	P24	17.7	53.2	450.6	370.8	596.1	1046.8
FT / FTplus 500-17	ATST 500	490	FPi32-6	4.7	P12	12.0	28.4	286.6	317.1	460.4	747.0
FT / FTplus 500-18	ATST 500	490	FPi32-12	8.6	P9	9.0	57.1	302.1	324.8	475.8	777.9
FT / FTplus 500-21	ATST 500	490	FPi32-12	8.6	P12	12.0	35.4	353.5	350.5	527.2	880.7
FT / FTplus 500-24	ATST 500	490	FPi32-6	4.7	P24	19.1	46.2	408.7	378.1	582.5	991.2
FT / FTplus 500-26	ATST 500	490	FPi32-12	8.6	P24	17.7	53.2	450.6	399.1	624.4	1075.0
FT / FTplus 750-17	ATST 750	756	FPi32-6	4.7	P12	12.0	28.4	286.6	395.1	538.5	825.1
FT / FTplus 750-18	ATST 750	756	FPi32-12	8.6	P9	9.0	57.1	302.1	402.9	553.9	855.9
FT / FTplus 750-21	ATST 750	756	FPi32-12	8.6	P12	12.0	35.4	353.5	428.6	605.3	958.8
FT / FTplus 750-29	ATST 750	756	FPi32-6	4.7	P24	24.3	46.2	497.5	500.6	749.3	1246.8
FT / FTplus 750-33	ATST 750	756	FPi32-12	8.6	P24	24.3	53.2	564.3	534.0	816.2	1380.5

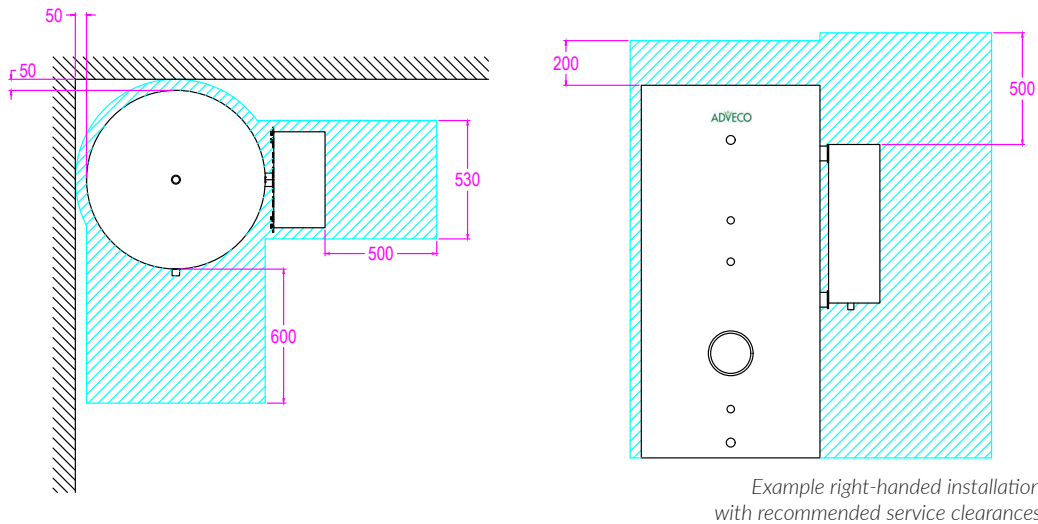
(1): Additional system configurations available from Adveco on request

(2): ASHP Output performance based on 2°C external air temperature and 55°C flow temperature

System Footprint

The Adveco FUSION is designed around a compact installation area to ensure maximum compatibility. A range of tank sizes and a choice of left or right-handed boiler mount configurations are available.

Note that additional outdoor space will be required for systems featuring ASHP. Additional wall or frame space will be required for systems featuring control panels.



Tank Model	Height (mm)	Tank Diameter (mm)		
		Uninsulated diameter for installation access	Insulated diameter	Max diameter including mounted boiler and pipework
ATSI or ATST 300	1740	500	700	1030
ATSI or ATST 400	1735	600	800	1130
ATSI or ATST 500	1990	600	800	1130
ATSI or ATST 580	1990	650	850	1180
ATSI or ATST 750	2080	750	950	1280