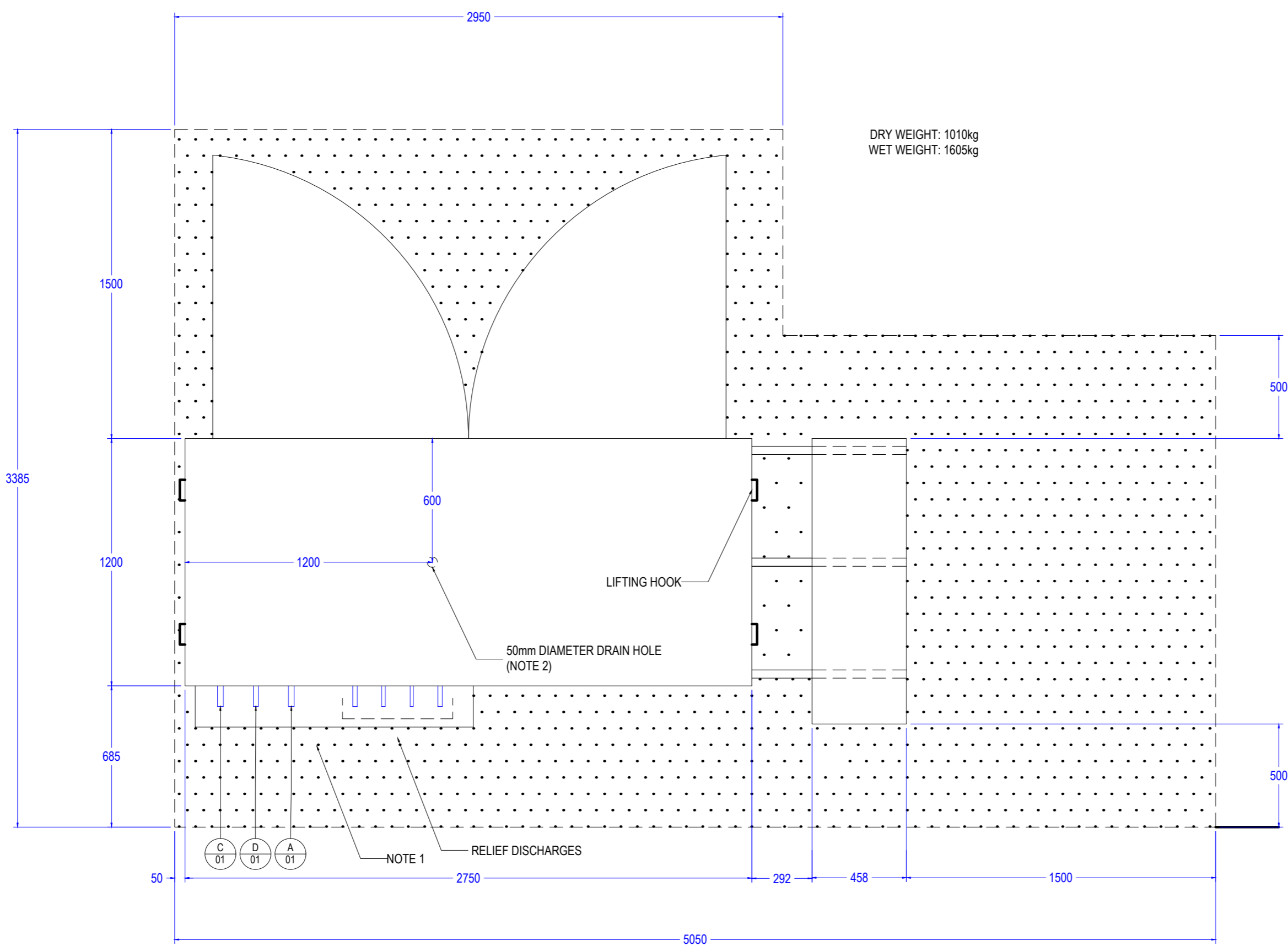


A B C D E F G H

1
2
3
4
5
6
7
8
9

- INSTALLATION NOTES**
1. REMOVE COWL TO PIPE UP AND SEAL WITH SILICONE WHEN FINAL FITTING.
 2. HOLE IN CENTRE OF FLOOR FOR HOUSING DRAINAGE. DO NOT BLOCK.
 3. FROST PROTECTION OF PIPEWORK OUTSIDE OF HOUSE TO BE APPLIED BY THE INSTALLER.

- SYSTEM CONNECTIONS**
- A MCWS COLD FEED
 - C HWS FLOW
 - D HWS SECONDARY RETURN

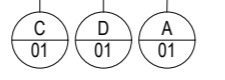


DRY WEIGHT: 1010kg
WET WEIGHT: 1605kg

LIFTING HOOK

50mm DIAMETER DRAIN HOLE
(NOTE 2)

NOTE 1 RELIEF DISCHARGES



REV.	CHANGES	BY	DATE	CH
1	ADDED SCHEMATIC AND WIRING DIAGRAMS	SB	19/11/2025	WS
0	RELEASE	KK	29/05/2025	BS

REVISE BY COMPUTER ONLY DO NOT SCALE OFF DRAWING

TO CONFIRM THAT THIS DRAWING IS THE LATEST REVISION, PLEASE EMAIL TECHNICAL@ADVECO.CO



SYSTEM TYPE:
PACKAGED PLANT ROOM PPR008

DRAWING TYPE:
PLAN VIEW DRAWING

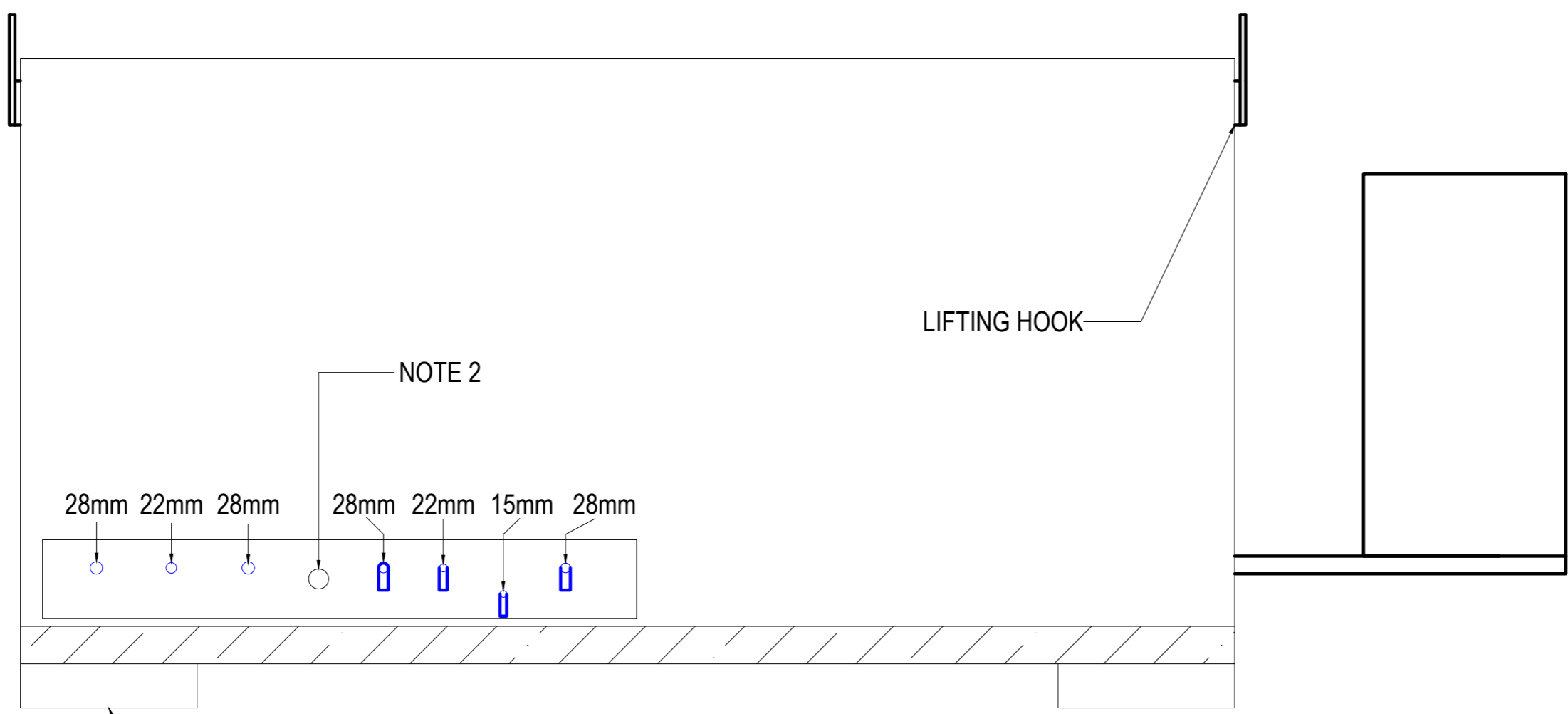
SHEET No:
1 of 5

DRAWING No:	DATE:	REVISION:	SCALE:	SIZE:
ADV-K-00049	29/05/2025	1	N.T.S.	A2

A B C D E F G H

1
2
3
4
5
6
7
8
9

- DESIGN NOTES**
1. MOUNT HOUSING ELEVATED TO ALLOW FREE FLOW OF WATER UNDERNEATH.
 2. 3 PHASE MAINS CABLE TO ENTER HOUSE UNDER COWL THROUGH INSTALLER DRILLED HOLE.



28mm 22mm 28mm 28mm 22mm 15mm 28mm

LIFTING HOOK

NOTE 2

NOTE 1

REV.	CHANGES	BY	DATE	CH
1	ADDED SCHEMATIC AND WIRING DIAGRAMS	SB	19/11/2025	WS
0	RELEASE	KK	29/05/2025	BS

REVISE BY COMPUTER ONLY DO NOT SCALE OFF DRAWING

TO CONFIRM THAT THIS DRAWING IS THE LATEST REVISION, PLEASE EMAIL TECHNICAL@ADVECO.CO

ADVECO
HOT WATER SPECIALISTS

ADVECO LIMITED
UNIT 7 & 8, ARMSTRONG MALL
FARNBOROUGH
GU14 0NR
+44(0) 1252 551540
WWW.ADVECO.CO

SYSTEM TYPE:
PACKAGED PLANT ROOM PPR008

DRAWING TYPE: BACK VIEW DRAWING		SHEET No: 2 of 5	
DRAWING No: ADV-K-00049	DATE: 29/05/2025	REVISION: 1	SCALE: SIZE: N.T.S. A2

A

B

C

D

E

F

G

H

DESIGN NOTES

- 1. AFTER INSTALLATION, REMOVE LIFTING HOOKS AND PLUG THE HOLES.

1

2

3

4

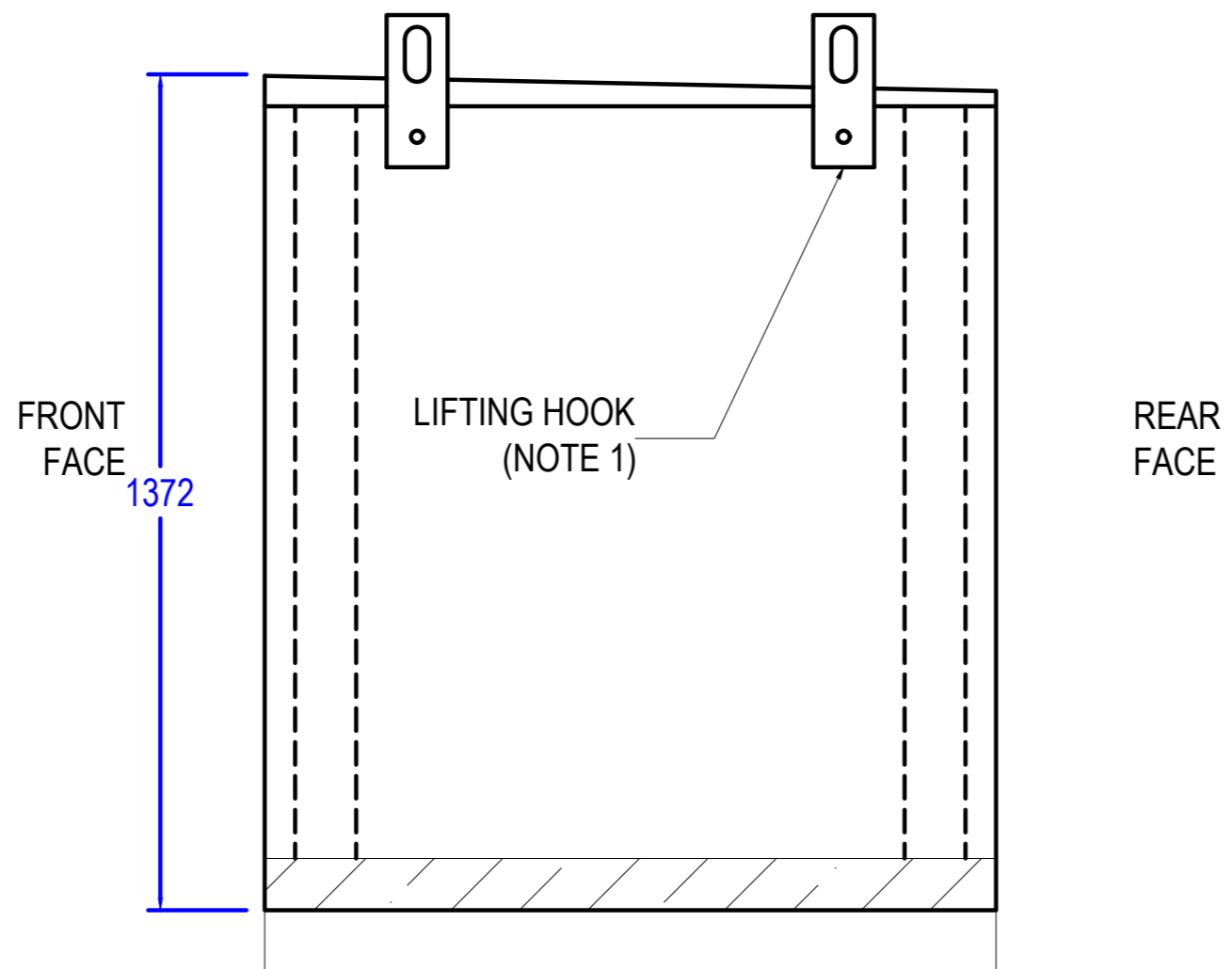
5

6

7

8

9



1	ADDED SCHEMATIC AND WIRING DIAGRAMS	SB	19/11/2025	WS
0	RELEASE	KK	29/05/2025	BS
REV.	CHANGES	BY	DATE	CH

REVISE BY COMPUTER ONLY DO NOT SCALE OFF DRAWING

TO CONFIRM THAT THIS DRAWING IS THE LATEST REVISION, PLEASE EMAIL TECHNICAL@ADVECO.CO

ADVECO
HOT WATER SPECIALISTS

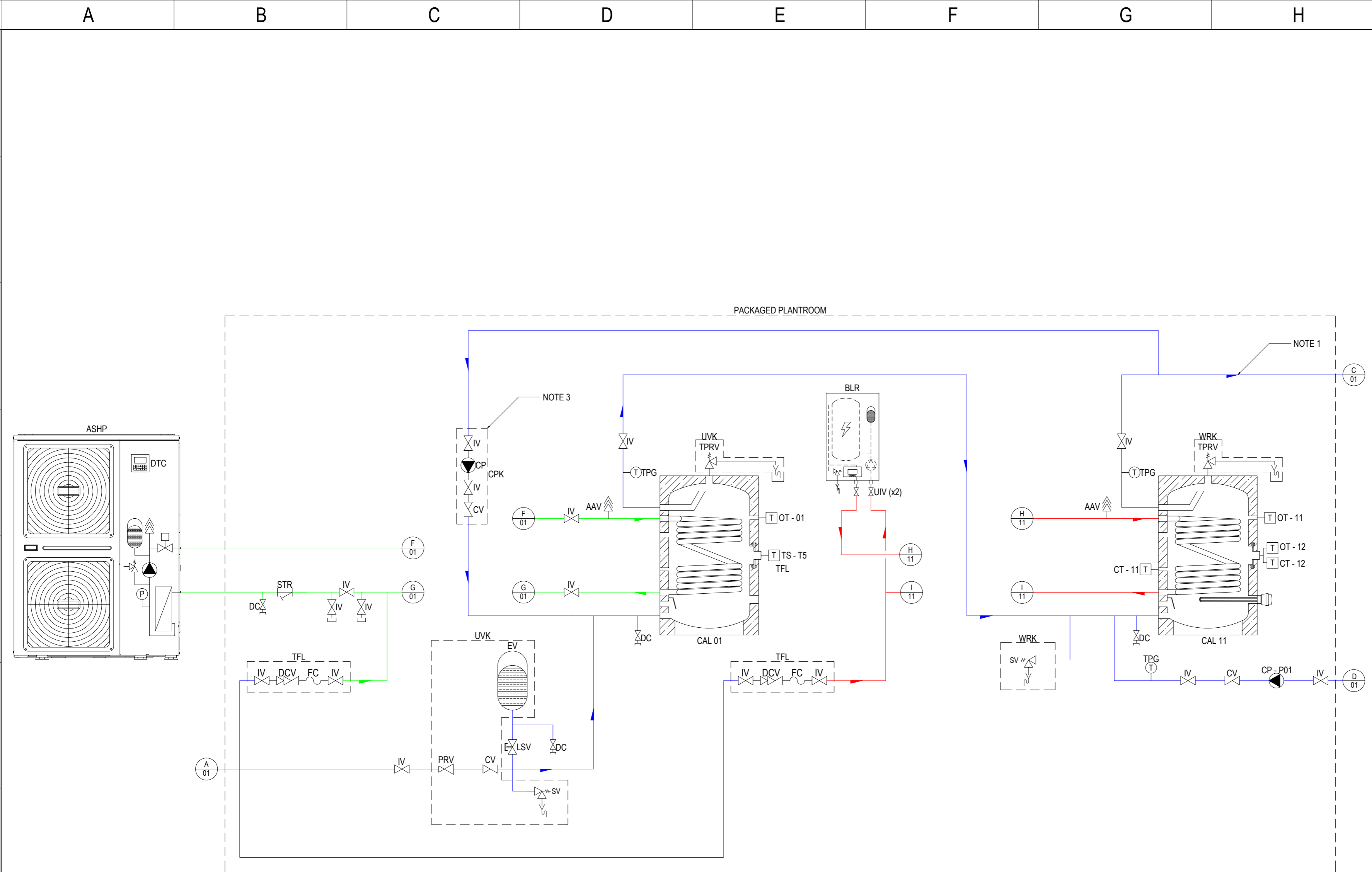
ADVECO LIMITED
UNIT 7 & 8, ARMSTRONG MALL
FARNBOROUGH
GU14 0NR
+44(0) 1252 551540
WWW.ADVECO.CO

SYSTEM TYPE:
PACKAGED PLANT ROOM PPR008

DRAWING TYPE:
BACK VIEW DRAWING

SHEET No:
3 of 5

DRAWING No:	DATE:	REVISION:	SCALE:	SIZE:
ADV-K-00049	29/05/2025	1	N.T.S.	A2



- DESIGN NOTES**
- THIS SCHEMATIC IS RELEVANT FOR HOT WATER STORAGE TEMPERATURES IN EXCESS OF 60°C. FOR SYSTEMS UTILISING LOWER STORAGE TEMPERATURES AND ALTERNATIVE LEGIONELLA CONTROL STRATEGIES, SPECIALIST DESIGN ADVICE MUST BE SOUGHT.
 - MAINTAINING THE TEMPERATURE WITHIN A HOT WATER DISTRIBUTION SYSTEM REDUCES THE TIME TAKEN TO DELIVER HOT WATER TO ALL OUTLETS BUT INCREASES OVERALL ENERGY CONSUMPTION. THE DESIGN OF THE HOT WATER INSTALLATION SHOULD THEREFORE BE CONSIDERED AND A PUMPED CIRCULATION OR TRACE HEATING SYSTEM ONLY USED WHEN NECESSARY.
CURRENT RULES IN FORCE REQUIRE 50°C WATER TO BE DELIVERED AT THE FURTHEST OUTLET WITHIN 60 SECONDS. THIS MAY NOT BE ACCEPTABLE FOR BUILDING USERS AND A SHORTER DELAY MAY BE MORE APPROPRIATE. HOWEVER, SOME WAIT TIME SHOULD BE TOLERATED IN ORDER TO PREVENT EXCESSIVE ENERGY CONSUMPTION.
THE POWER AND CONTROL STRATEGY OF ANY SECONDARY RETURN PUMP IS TO BE DETERMINED BY OTHERS WITH CONSIDERATION FOR ANY TIME CONTROL OF THE HEAT SOURCE.
 - THE OPERATION OF THE DESTRATIFICATION PUMP SHALL BE IN ACCORDANCE WITH THE LEGIONELLA CONTROL RISK ASSESSMENT. WHERE NO RISK ASSESSMENT IS AVAILABLE, IT IS RECOMMENDED THAT THE PUMP OPERATES DAILY FOR A PERIOD OF 2 HOURS AT A TIME OF LOW DEMAND. IT IS IMPERATIVE THAT THE ENERGY SOURCE IS OPERATIONAL WHEN THE PUMP IS RUNNING.
 - LTHW PRIMARY SYSTEMS NEED A METHOD OF FILLING AND MAINTAINING THE PRESSURE THAT MEETS THE BACKFLOW PROTECTION REQUIREMENT OF THE WATER REGULATIONS; THE LEVEL OF PROTECTION IS BASED ON THE SIZE AND LOCATION OF THE LTHW SYSTEM AND SHOULD BE DETERMINED BY A COMPETENT PERSON. FOR SOME BUILDINGS A DEDICATED SUPPLY FOR FILLING LTHW IS PROVIDED VIA A CAT 4 OR 5 SYSTEM. FOR OTHERS LOCAL PROTECTION MUST BE INCLUDED BASED ON THE CATEGORY OF RISK AND WILL TYPICALLY BE A FILLING LOOP (CAT 3) OR A PRESSURISATION UNIT (CAT 4). IF A FILLING LOOP IS INSTALLED, THE FLEXIBLE HOSE SHOULD BE REMOVED AND THE MOUNTING POINTS SEALED AFTER USE. WHERE AN AUTOMATIC PRESSURISATION UNIT IS UTILISED, INSTALL A WATER METER TO MONITOR THE VOLUME OF WATER ADDED TO THE SYSTEM.
 - MECHANICAL EQUIPMENT INSTALLED OUTSIDE THE THERMAL ENVELOPE OF THE BUILDING MUST HAVE FROST PROTECTION BY OTHERS THROUGH TRACE HEATING OR ANTIFREEZE FLUID. WHERE ANTIFREEZE IS USED A FILL POINT MUST BE INCLUDED INSTEAD OF A FILLING LOOP/PRESSURISATION UNIT.
WHERE TEMPORARY FILLING LOOPS ARE INSTALLED, THE FLEXIBLE CONNECTION SHOULD BE REMOVED AND THE MOUNTING POINTS SEALED ONCE THE DESIRED PRESSURE HAS BEEN ACHIEVED. WHERE AN OPTIONAL AUTOMATIC PRESSURISATION UNIT IS UTILISED, IT IS RECOMMENDED THAT A WATER METER IS INSTALLED TO MONITOR THE VOLUME OF WATER ADDED TO THE SYSTEM. THE FILLING METHOD CHOSEN SHOULD BE INSTALLED WITHIN THE THERMAL ENVELOPE OF THE BUILDING.

- ITEM DESIGNATORS**
- REQ REQUIRED BY REGULATION OR CODE OF PRACTICE
 FNC REQUIRED FOR SATISFACTORY FUNCTION OF SYSTEM
 ANC ANCILLARY ITEM - RECOMMENDED BUT NOT MANDATORY
 INC INCLUDED WITH MAIN EQUIPMENT, NOT ITEMISED ON PROPOSAL

- SYSTEM CONNECTIONS**
- A MCWS COLD FEED
 - C HWS FLOW
 - D HWS SECONDARY RETURN
 - F LOW-GRADE LTHW FLOW (62°C MAX)
 - G LOW-GRADE LTHW RETURN
 - H LTHW FLOW (63°C MIN)
 - I LTHW RETURN
 - T PRIMARY CIRCUIT FEED

1	ADDED SCHEMATIC AND WIRING DIAGRAMS	SB	19/11/2025	WS
0	RELEASE	KK	29/05/2025	BS
REV.	CHANGES	BY	DATE	CH

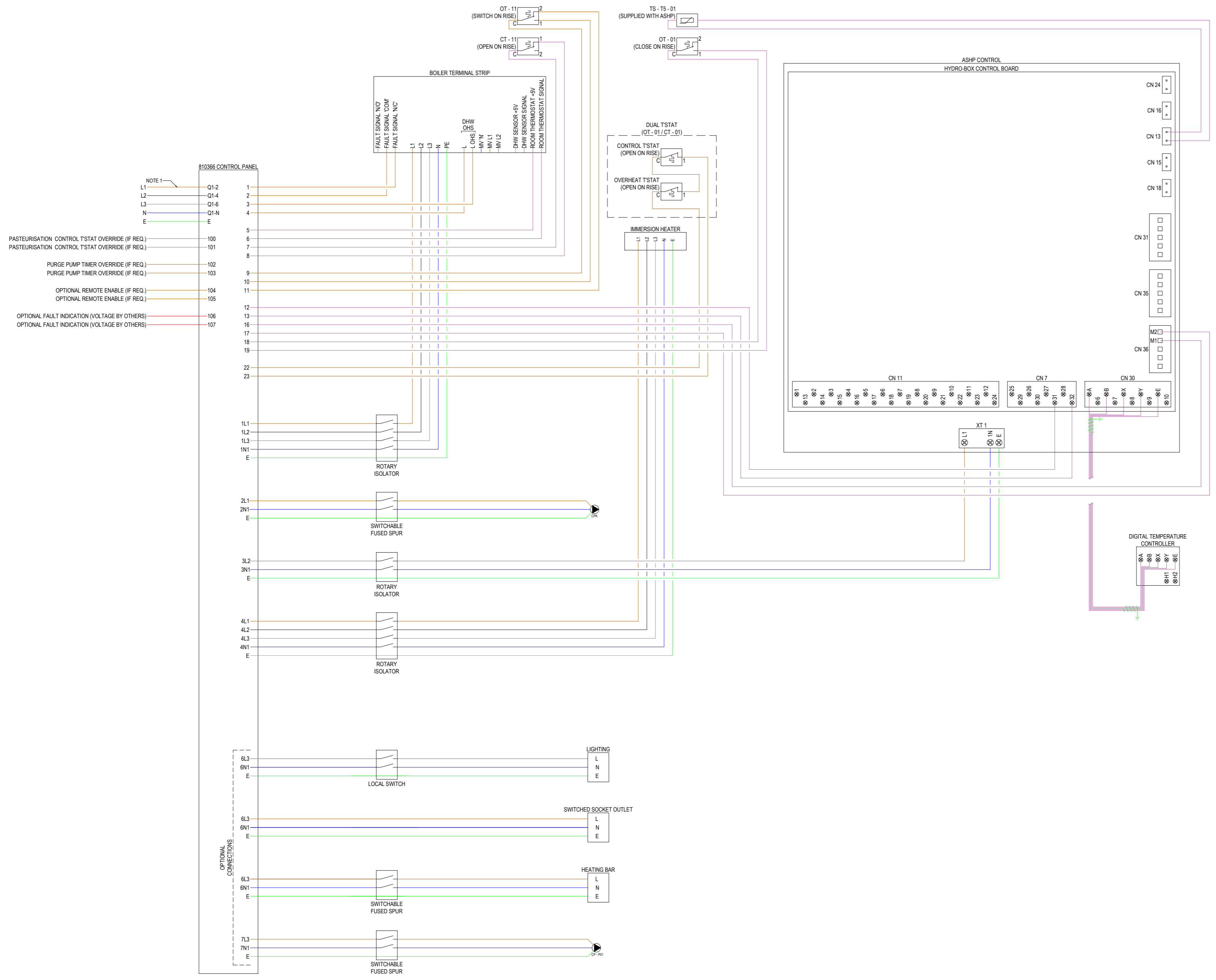
REVISE BY COMPUTER ONLY DO NOT SCALE OFF DRAWING

TO CONFIRM THAT THIS DRAWING IS THE LATEST REVISION, PLEASE EMAIL TECHNICAL@ADVECO.CO



SYSTEM TYPE:
 PACKAGED PLANT ROOM PPR008

DRAWING TYPE: SCHEMATIC DRAWING		SHEET No: 4 of 5	
DRAWING No: ADV-K-00049	DATE: 29/05/2025	REVISION: 1	SCALE: SIZE: N.T.S. A2



DESIGN NOTES

WARNING: THIS LAYOUT USES CONTROL PANEL WIRING DRAWING NUMBER WEP21462 ISSUE C AND IS NOT COMPATIBLE WITH ANY OTHER DRAWING NUMBER OR ISSUE. IF YOU HAVE A DIFFERENT CONTROL PANEL OR ISSUE DO NOT USE THIS DRAWING UNTIL VERIFYING ACCURACY WITH ADVECO TECHNICAL ON TECHNICAL@ADVECO.CO OR 01252 551 540

1. SIZE THE SUPPLY CABLE TO THE ADVECO CONTROL PANEL BASED ON THE CIRCUIT BREAKER LOCATED IN THE SITE DISTRIBUTION BOARD. THE CIRCUIT BREAKER SHOULD BE SELECTED BASED ON THE FULL LOAD CURRENT OF THE ELECTRIC BOILER AND THE LARGER OF THE AIR-SOURCE HEAT PUMP OR IMMERSION, BUT SHALL BE NO LARGER THAN 63A. REFER TO INDIVIDUAL APPLIANCE LOADS BELOW.

	Full Load Amps	Boiler	
		P12	P24
FPI32-6	No Immersion	28.4	46.2
	6 kW Immersion	28.4	46.2
	9 kW Immersion	30.5	48.3
FPI32-9	12 kW Immersion	34.8	52.6
	No Immersion	32.4	50.2
	6 kW Immersion	32.4	50.2
FPI32-12	9 kW Immersion	32.4	50.2
	12 kW Immersion	34.8	52.6
	No Immersion	35.4	53.2
ADVS10W	6 kW Immersion	35.4	53.2
	9 kW Immersion	35.4	53.2
	12 kW Immersion	36.4	54.2
Independent	No Immersion	20.4	38.2
	6 kW Immersion	29.1	46.9
	9 kW Immersion	33.5	51.3
ASHP Supply	12 kW Immersion	37.8	55.6

1	ADDED SCHEMATIC AND WIRING DIAGRAMS	SB	19/11/2025	WS
0	RELEASE	KK	29/05/2025	BS
REV.	CHANGES	BY	DATE	CH

REVISE BY COMPUTER ONLY DO NOT SCALE OFF DRAWING

TO CONFIRM THAT THIS DRAWING IS THE LATEST REVISION, PLEASE EMAIL TECHNICAL@ADVECO.CO

ADVECO LIMITED
UNIT 7 & 8, ARMSTRONG MALL
FARNBOROUGH
GU14 0NR
+44(0) 1252 551540
WWW.ADVECO.CO

SYSTEM TYPE:
PACKAGED PLANT ROOM PPR008

DRAWING TYPE: WIRING DIAGRAM		SHEET No: 5 of 5	
DRAWING No: ADV-K-00049	DATE: 29/05/2025	REVISION: 1	SCALE: SIZE: N.T.S. A2