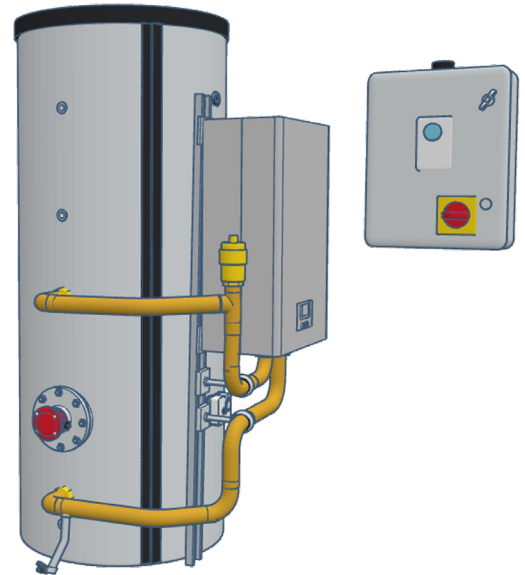


# Advenco Hot Water System Specifications: System Options for McDonalds UK Supply

## Option 1: FUSION FESplus400-24 - Specification TR200537

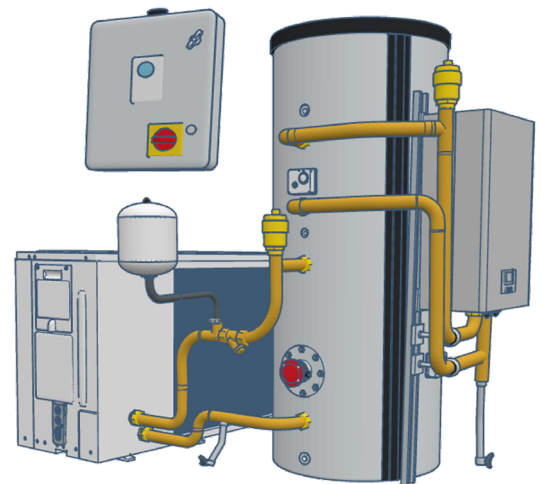
Advenco scale free electric boiler hot water system using twin coil indirect cylinder. Supplied with quick fit pipework kit from boiler to bottom coil. System is future ready for the addition of an Air Source Heat Pump and can be adapted simply by changing the pipework kit for the top coil connections. Complete with unvented kit, bracketry, backup immersion heater and controls with following features: Time control of system, timed disinfection program, auto changeover to backup immersion if boiler goes into fault, email notification of fault, wiring centre for quick, error free installation, BMS connections for fault/enable/disinfection, additional connections for secondary pump, destrat pump, and other auxiliary supplies. Comes heat pump ready.



Boiler Model	P24	Boiler Power	24 kW
Tank Model	ATST 400	Storage Volume	400 Litres
Backup Immersion Model	810120K	Backup Immersion Power	9 kW
Recovery Time	1 Hour	Clearance Footprint	1450 x 1600 mm L x W 2000mm H
Tank+Boiler Full Weight	550 kg	Tank+Boiler Arrangement	Right- or left- handed pipework
Amperage Supply to Control Panel (24 kW Boiler)	38A/ph	Amperage Supply to Control Panel (Downrated Boiler with Future Heat Pump)	38A/ph

## Option 2: FUSION FTWplus400-22 - Specification TR200538

Advenco scale free electric boiler hot water system with low cost/carbon heat pump preheat using twin coil indirect cylinder. Supplied with quick fit pipework kit from boiler to top coil. Complete with unvented kit, bracketry, backup immersion heater and controls with following features: Time control of system, timed disinfection program, auto changeover to backup immersion if boiler or heat pump goes into fault, email notification of fault, wiring centre for quick, error free installation, BMS connections for fault/enable/disinfection, additional connections for secondary pump, destrat pump, and other auxiliary supplies.



Heat Pump Model	ADVS10W	Heat Pump Power	10 kW
Boiler Model	P12	Boiler Power	12 kW
Tank Model	ATST 400	Storage Volume	400 Litres
Backup Immersion Model	810119K	Backup Immersion Power	6 kW
Recovery Time	1 Hour	Indoor Clearance Footprint	1450 x 1600 mm L x W 2000mm H
Tank+Boiler Full Weight	550 kg	Heat Pump Airflow Clearance	2500 x 2000 x 1300 mm
Heat Pump Full Weight	132 kg	Tank+Boiler Arrangement	Right- or left- handed pipework
Amperage Supply to Control Panel (ASHP + Boiler)	38A/ph		

**For sites with restricted clearance, electrical supply, or other limitations, non-standard options are available. Please contact Advenco for further details.**

# Advenco Hot Water System Specifications: System Options for McDonalds UK Supply

## Option 3: PPR0007 - Specification TR200539

Advenco scale free prepackaged electric boiler hot water system with low head indirect cylinder to minimise planning height impact. Supplied completely pre-installed in GRP housing with all required heating, lighting, power. Installation only requires lifting and siting and connecting one power supply, cold water, hot water, secondary return pipework. Control features include: Time control of system, timed disinfection program, auto changeover to backup immersion if boiler goes into fault, email notification of fault, BMS connections for fault/enable/disinfection. House is sold as heat pump ready, but without preheat cylinder or heat pump to be added at a later date.

Boiler Model	P24	Boiler Power	24 kW
Tank Model	1x ATSI 210	Storage Volume Total	210 Litres
Backup Immersion Model	810120K	Backup Immersion Power	9 kW
Recovery Time	1 Hour		
House Full Weight as Supplied	1160 kg	House Full Weight with Future Planning	1605 kg
House Clearance Footprint as Supplied	3000 x 3400 x 1400 mm	House Clearance Footprint with Future Planning	5050 x 3400 x 1400 mm
Amperage Supply to Control Panel (24 kW Boiler)	38A/ph	Amperage Supply to Control Panel (Downrated Boiler with Future Heat Pump)	38A/ph



## Option 4: PPR0008 - Specification TR200540

Advenco scale free prepackaged electric boiler hot water system with low cost/carbon heat pump preheat using low head indirect cylinders to minimise planning height impact. Supplied completely pre-installed in GRP housing with all required heating, lighting, power. Installation only requires lifting and siting and connecting one power supply, cold water, hot water, secondary return pipework. Control features include: Time control of system, timed disinfection program, auto changeover to backup immersion if boiler or heat pump goes into fault, email notification of fault, BMS connections for fault/enable/disinfection.

Heat Pump Model	ADVS10W	Heat Pump Power	10 kW
Boiler Model	P12	Boiler Power	12 kW
Tank Model	2x ATSI 210	Storage Volume Total	420 Litres
Backup Immersion Model	EB0038	Backup Immersion Power	6 kW
Recovery Time	1 Hour	House Full Weight	1605 kg
Amperage Supply to Control Panel (ASHP + Boiler)	38A/ph	House Clearance for Airflow / Footprint	5050 x 3400 x 1400 mm



**For sites with restricted clearance, electrical supply, or other limitations, non-standard options are available. Please contact Advenco for further details.**